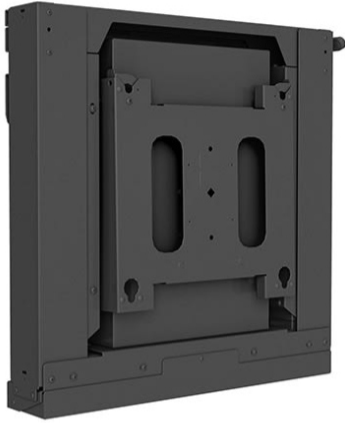


Extra-Large Electric Height Adjust Wall Mount **SKU: XSD1U**

---



Vertical lift: 26" (660mm)

## Specifications

## Dimensions & Measurements

Shipping Dimensions	40" x 30" x 11.5" (1016 x 762 x 292.1 mm)
Shipping Weight	60.33 kg (133 lbs)
Typical Screen Size	50" - 80" (1270mm - 2032mm)
Weight Capacity	310 lbs (140.6 kg)

## Characteristics & Features

Adjustability	Automated, Height Adjustable, Micro-Adjustable
Adjustments	Leveling adjustment: up to 1.5" (38mm)
Application	Wall
Color	Black
Power Cord	US Cord
Special Features	Height Assist
TAA Compliant	No
UPC	841872173320
VESA Mounting Pattern	200x200 – 860x510mm

## Certifications & Warranties

Certifications	<ul style="list-style-type: none"><li>• TUV</li><li>• UL Listed</li></ul>
----------------	---

Source: <https://www.legrandav.com/products/mounts/display-tv-mounts/xl-electric-height-adjust-wall-mount-xsd1u/xsd1u>