

700 series

Flat panel Floor stands

The 700 series Flat panel Floor stands.

Quick assembling models available, a ideal solution for rental purposes in combination with a flightcase.



Audipack®

It's great to have solutions...

Audipack 700 series, designed to be **Displayed!**



The Audipack 700 series flat panel floor stands, a presentation solutions with many advantages.

A unique variety of products based on one specially designed concept. A concept that has resulted in a wide range of standardized Audipack products, but also offers the possibility of customizing, tailored to individual needs.

The Audipack 700 series is a range of supports and stands for flat panels which offers precision combined with flexibility. This concept complies with the functional, technical and aesthetical demands of today's professional presentation. Creating a base for numerous applications where design, safety, user-friendliness and flexibility are key elements.

The Audipack 700 series is equipped with the Audipack Lock&Secure mounting system.

The most perfect rental combination.

The 700 series (Quick Release) floor stands are dividable by hand and can be fitted into a Audipack flightcase inclusive the flat panel. Available for any screen size.

Flightcases are available in different colours with optional logo prints.

Please refer to our separate flightcase chapter, page 165, for more flightcase solutions.



- ▲ **Integrated measuring ruler for precise positioning**
- ▲ **Landscape or portrait positioning of the panel**
- ▲ **3 integrated separate cable channels per column**
- ▲ **Detachable column (cable) covers**
- ▲ **Continuously adjustable flat panel height**
- ▲ **Standard or custom built models available**



Detachable column (cable) covers



Neatly concealed cables

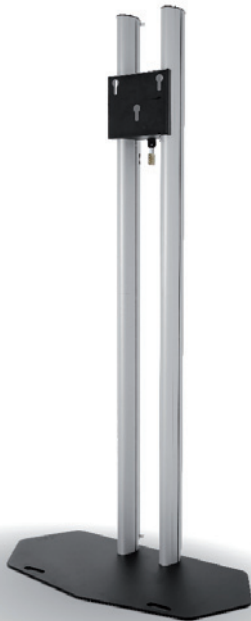
Quick Release



Quick release, perfect rental solution

700 SERIES FLOOR STANDS

700 SERIES FLOOR STANDS



Ref.	390700	
Dimensions in mm	W 900 x D 450 x H 1821	Max. " 55 Max. 60
Netto weight	39 Kg	
Ref.	390701	
Dimensions in mm	W 900 x D 450 x H 1829	Max. " 55 Max. 60
Netto weight	45 Kg	Quick Release
Ref.	390702	
Dimensions in mm	W 900 x D 530 x H 2029	Max. " 65 Max. 60
Netto weight	46 Kg	Quick Release
Ref.	390707	
Dimensions in mm	W 900 x D 530 x H 1829	Max. " 65 Max. 85
Netto weight	49 Kg	Quick Release
Ref.	390708	
Dimensions in mm	W 900 x D 530 x H 1821	Max. " 65 Max. 85
Netto weight	42 Kg	

700 SERIES FLOOR STANDS ON WHEELS



Ref.	390704	
Dimensions in mm	W 900 x D 530 x H 1804	Max. " 55 Max. 60
Netto weight	40 Kg	
Ref.	390705	
Dimensions in mm	W 900 x D 530 x H 1812	Max. " 55 Max. 60
Netto weight	51 Kg	Quick Release

700 SERIES FLOOR STANDS BACK TO BACK



Ref.	390706	
Dimensions in mm	W 900 x D 600 x H 1821	Max. " 55 + Max. " 55 Max. 80
Netto weight	42 Kg	
Load	80 kg symmetrical	

700 SERIES FLOOR STANDS

700 SERIES FLOOR STANDS SINGLE COLUMN



Ref.	390770
Dimensions in mm	W 900 x D 450 x H 1821
Netto weight	26 Kg



Ref.	390771
Dimensions in mm	W 900 x D 450 x H 1829
Netto weight	32 Kg



Quick Release

700 SERIES FLOOR STANDS SINGLE COLUMN ON WHEELS



Ref.	390774
Dimensions in mm	W 900 x D 530 x H 1804
Netto weight	29 Kg



Ref.	390775
Dimensions in mm	W 900 x D 530 x H 1812
Netto weight	35 Kg



Quick Release

700 SERIES FLOOR STANDS EXTRA STABILITY



Ref.	390780
Dimensions in mm	W 1255 x D 733 x H 1856
Netto weight	32 Kg



See page 20 for a Floorstand up to 150 Kg.

See page 16 for the optional coverplate (390781) for finishing the wheel frame.

ELECTRIC HEIGHT ADJUSTABLE FLOOR STAND

Perfect solution for
Touch screens



Ref.	FS-QR120E
-------------	------------------

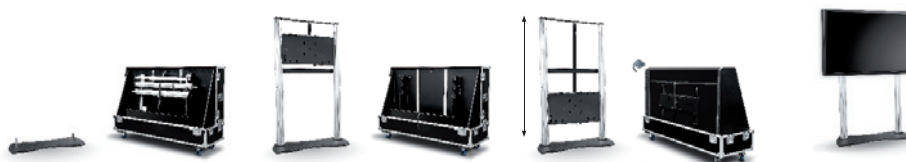
Quick Release



Transport and protect your presentation.

Your presentation equipment and flatscreen in just 1 flightcase.

Raise the screen out of the flightcase!



700 SERIES FLOOR STANDS

VIDEO WALL FLOOR STAND



Ref.	390725
Dimensions in mm	W 900 x D 530 x H 2729
Netto weight	60 Kg

3 x



Quick Release



Connect multiply floor stands with the accessoire **390728** and create the perfect dividible video wall. See page 15

For more video wall and multi screen solutions see from page....

700 SERIES MONITOR STANDS



Ref.	390722
Dimensions in mm	W 900 x D 530 x H 486
Netto weight	27 Kg

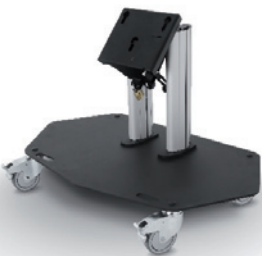


Ref.	390720
Dimensions in mm	W 900 x D 530 x H 494
Netto weight	27 Kg



Quick Release

700 SERIES MONITOR STANDS ON WHEELS



Ref.	390723
Dimensions in mm	W 900 x D 530 x H 613
Netto weight	30 Kg



Ref.	390721
Dimensions in mm	W 900 x D 530 x H 621
Netto weight	30 Kg



Quick Release

700 series Floor stands

ACCESSORIES

MOUNTING BRACKETS FOR FLAT PANELS (SEE PAGE 37 FOR THE FULL PROGRAM)

See "Mounting brackets for flat panels" for the full program see page 37



Mount any brand and type of flat panel on any Audipack system with the Audipack mounting brackets.



Universal mounts



Brand related mounts



VESA mounts

700 SERIES FLOOR STANDS

MANUAL PORTRAIT/LANDSCAPE ADAPTER

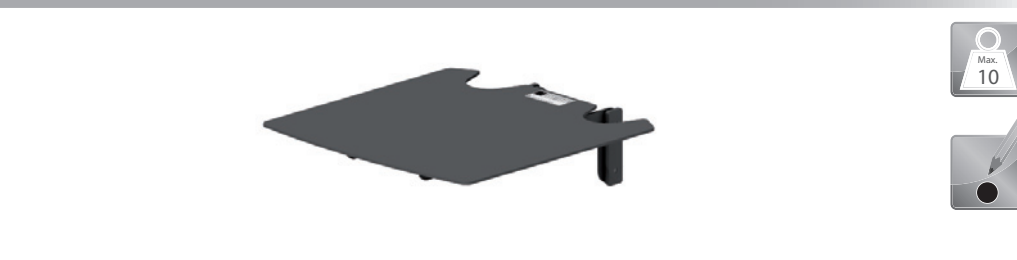


Manual left and right rotation



Ref.

P3496

LAPTOP SUPPORT FOR DOUBLE COLUMN STANDS

Ref.

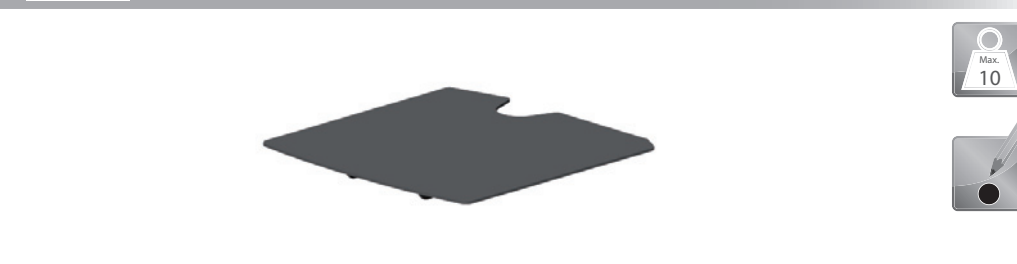
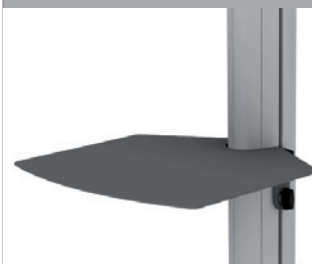
Max. dimensions equipment in mm

390715

W 300 x D 250

390716

W 450 x D 350

LAPTOP SUPPORT FOR SINGLE COLUMN STANDS

Ref.

Max. dimensions equipment in mm

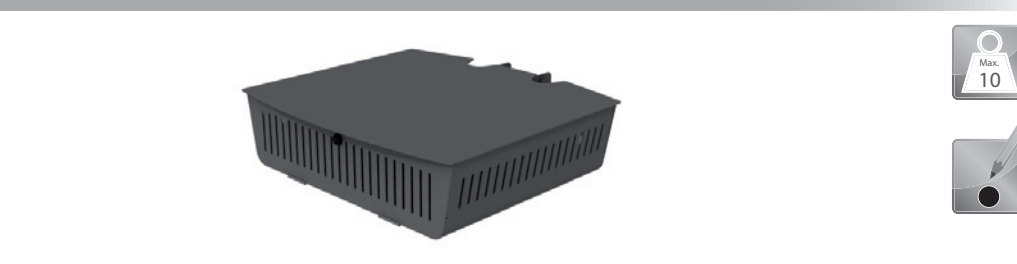
390729

W 300 x D 250

390730

W 450 x D 350

EQUIPMENT CABINET



Ref.

Max. dimensions equipment in mm

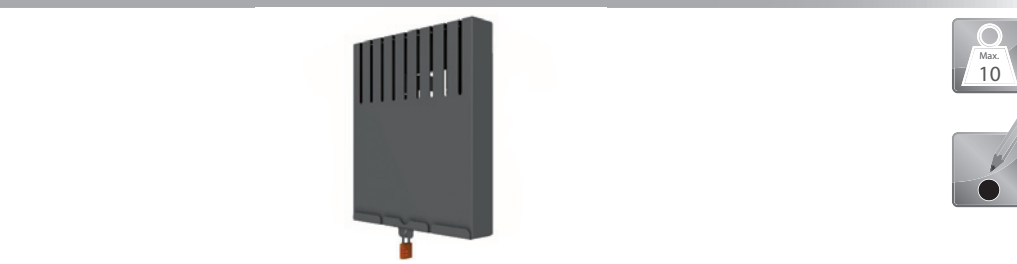
EC-735

W 440 x D 380 x H 110

EC-736

W 440 x D 380 x H 80

LAPTOP HOUSING



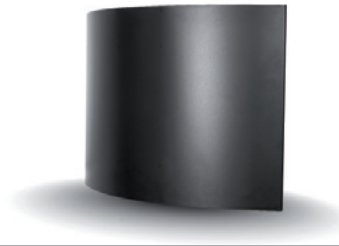
Ref.

Max. dimensions equipment in mm

390737

W 400 x D 55 x H 350

BACK COVER



Ref.
Diagonal screen size

390748
40" - 42"

390749
50" - 52"

390750
55" - 60"

VIDEO WALL CONNECTOR



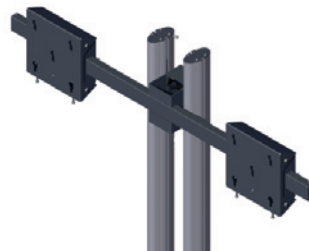
More "Video wall solutions"
check page 99



Ref.
Lenght in mm

390728
785-1330

VIDEO CONFERENCE MOUNTING HEAD



More "Video conferencing solutions"
check page 31



-2°/+2°



Ref.
Maximum screen width

390768
720 - 1100

390769
910 - 1510

CAMERA SUPPORT FOR DOUBLE COLUMN STANDS



More "Video conferencing solutions"
check page 31



Ref.
Max. dimensions equipment in mm

390738
W 200 x D 255

CAMERA SUPPORT FOR SINGLE COLUMN STANDS



More "Video conferencing solutions"
check page 31



Ref.
Max. dimensions equipment in mm

390731
W 250 x D 250

700 SERIES FLOOR STANDS

COVER PLATE (SUITABLE FOR 390780, PAGE 12)



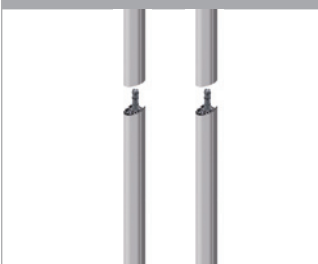
Ref.

390781

COLUMN SET (TO CHANGE A FLOOR STAND INTO MONITOR STAND)

Ref.
Length in mm390724
400

EXTENSION COLUMN SET (ONLY SUITABLE FOR 390708)



Set of 2

Ref.
Length in mm390732
900

MOUNTING HEAD FOR DOUBLE COLUMN FLOOR STANDS



Excluding numeric lock ref. 230052

Max. °
55

Ref.

390711

BACK-TO-BACK MOUNTING HEAD FOR DOUBLE COLUMN FLOOR STANDS



Excluding numeric lock ref. 230052

Max. °
55

Ref.

390712