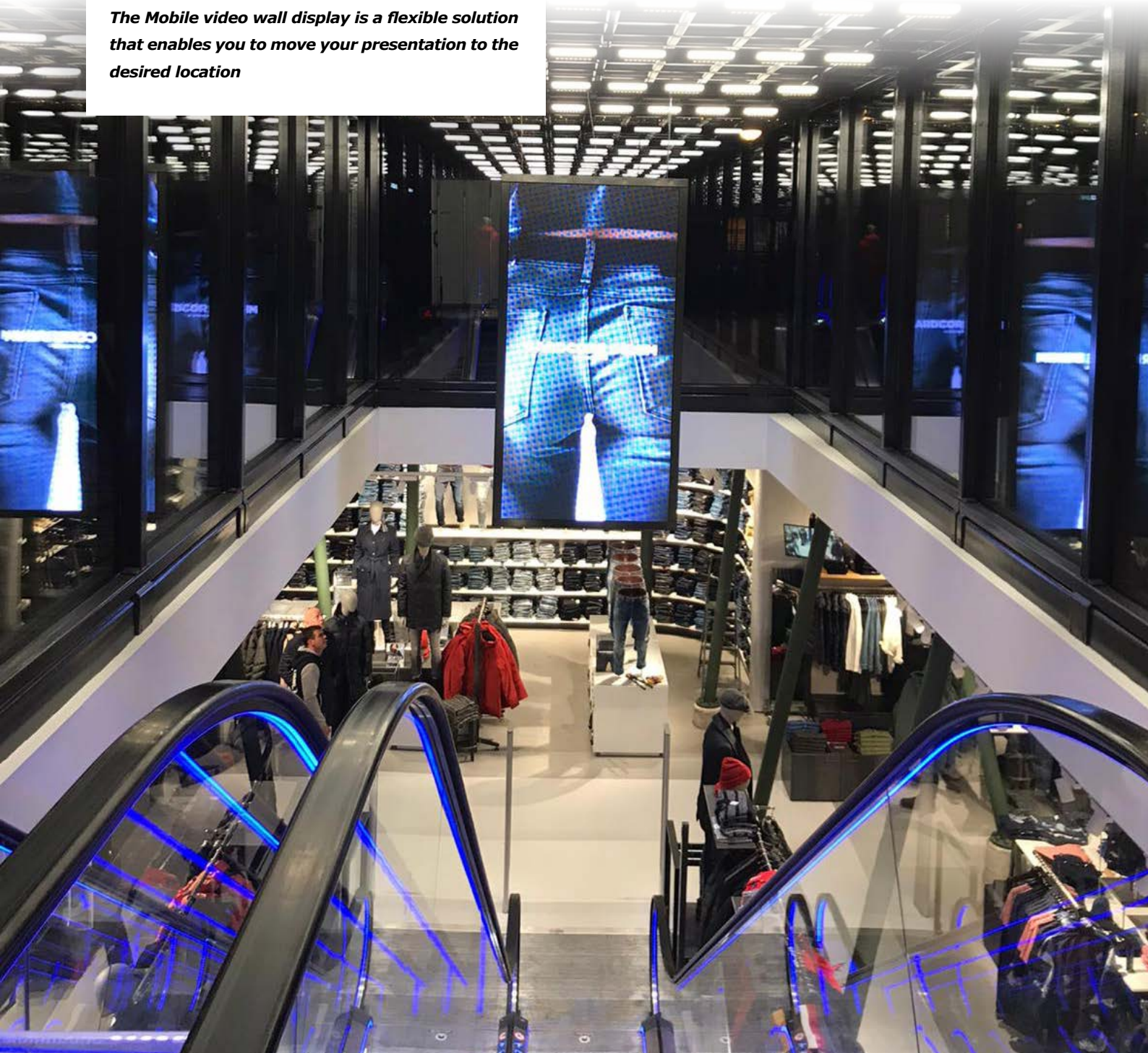




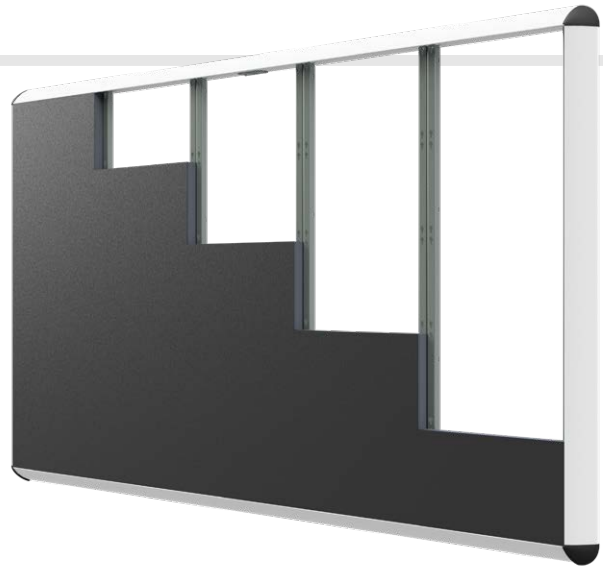
# ***Led wall Solutions***

## ***Trolleys & Installation***

*The Mobile video wall display is a flexible solution that enables you to move your presentation to the desired location*



***"Audipack designs and creates logical and refined LED mounting systems for all brands of LED panels, and almost for any application."***



From regular wall mounted systems (in-and outdoor, rental pop-up systems and luxury indoor trolleys. With years of knowledge Audipack created the systems that enable a quick and easy installation but also future proof, enabling systems to be modified in future.

The LWM systems are wall mounting solutions based on a specific standard that has been developed. The basic frame is easy to adapt to the screens to be used and as a cherry on the pie we supply a neat corner finishing to finish and protect the sides of the fragile panels.

The LSM systems are indoor trolleys specially designed to be used indoors at venues etc. This type of trolley is actually based on the known FSW-VW trolleys but modified to install LED units to the frame. Choices can be made in size, a nice furniture finishing, rear finishing when the back-side of the unit is visible and even electric height adjustment is possible.

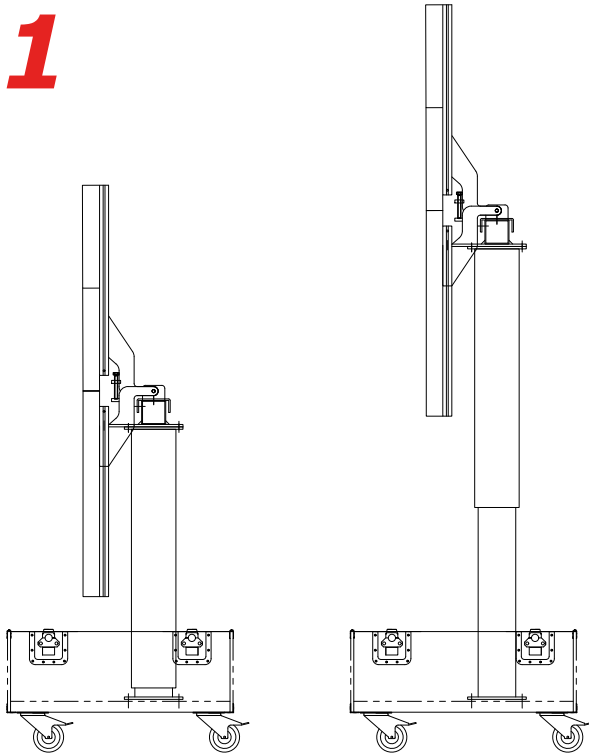




## Custom LED solutions

Next to a standard range of products, Audipack also fabricates custom solutions such as pop-up, foldable or other kind of systems. With Audipack own engineering department possibilities are almost limitless.

1



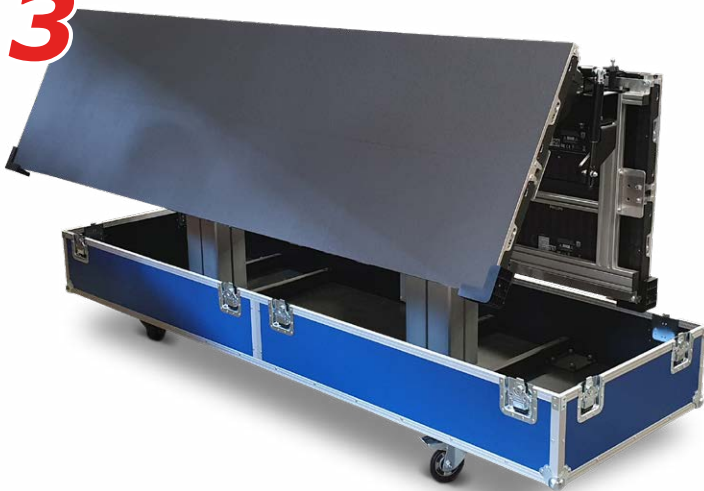
2



4



3



With Audipack own engineering department possibilities are almost limitless.  
Combination with flightcases or furniture are no problem as all products are designed and build in-house.

## LED Wall trolleys

The mobile Led wall or LED trolley is the flexible solution in comparison with a wall mounted or ceiling suspended led screens walls. The trolley is made to order and offers lots of possibilities. The trolley in basic consists out of the tubular trolley frame, with or without integrated screen lift mechanism. This can be finished with a furniture finishing in colour and extra options:

Options:

- LSH / LST audio system made by Audipack, soundbar of vertical column speakers
- Subwoofer
- Electric screen height adjustment
- Decor rear finishing panel to cover the back-side of the screen
- Furniture finishing with optional equipment racking

The electric lift mechanism enables to lower the screens for internal transport or elevating the screens for presenting to standing audience.

The audio configuration is based on the well know Audipack LSH and LST sound systems. Whether it's for a small group of people in close range or a crowd of a few hundred, the Audipack sound systems offer a great sound even not impressive sound.



### VIDEOWALL TROLLEYS BASIC FRAME



**Ref. LSW-4x4-5050**

Led cabinet size mm	W500 x H500
Configuration	4x4
Distance floor to bottom screen (mm)	900



**Ref. LSW-5x5-5050E**

Led cabinet size mm	W500 x H500
Configuration	5x5
Distance floor to bottom screen (mm)	900



**Ref. LSW-4x4-6060**

Led cabinet size mm	W600 x H600
Configuration	4x4
Distance floor to bottom screen (mm)	900



**Ref. LSW-4x4-6060E**

Led cabinet size mm	W600 x H600
Configuration	4x4
Distance floor to bottom screen (mm)	900





## LED WALL TROLLEYS FURNITURE FINISHING



**Ref.** **LSW-FF-4x4-5050**

Led cabinet size mm W500 x H500  
Configuration 4x4

**Ref.** **LSW-FF-5x5-5050**

Led cabinet size mm W500 x H500  
Configuration 5x5

**Ref.** **LSW-FF-4x4-6060**

Led cabinet size mm W600 x H600  
Configuration 4x4

**Ref.** **LSW-FF-5x5-6060**

Led cabinet size mm W600 x H600  
Configuration 5x5

## LED WALL TROLLEYS REAR COVER



**Ref.** **LSW-RC-4x4-5050**

Panel sections 3  
Standard colour Black



**Ref.** **LSW-RC-5x5-5050**

Panel sections 3  
Standard colour Black



**Ref.** **LSW-RC-4x4-6060**

Panel sections 3  
Standard colour Black



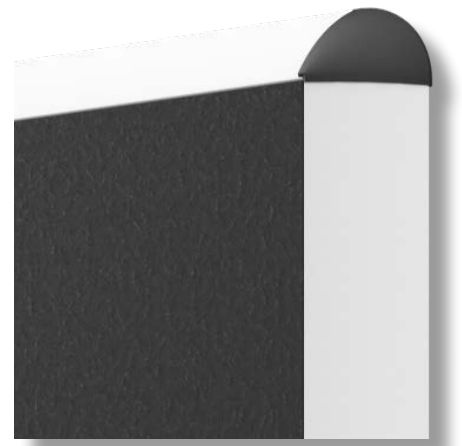
**Ref.** **LSW-RC-5x5-6060**

Panel sections 3  
Standard colour Black



# LED Wall mounting systems

Corner finishing



Detail bezel finishing

Construction

## LED WALL MOUNTING SYSTEMS STANDARD CONFIGURATION



**Ref. LWM-4x4-5050**

Led cabinet size mm	W500 x H500
Configuration	4x4
Bezel finishing	Yes



**Ref. LWM-5x5-5050**

Led cabinet size mm	W500 x H500
Configuration	5x5
Bezel finishing	Yes



**Ref. LWM-4x4-6060**

Led cabinet size mm	W600 x H600
Configuration	4x4
Bezel finishing	Yes



**Ref. LWM-5x5-6060**

Led cabinet size mm	W600 x H600
Configuration	4x4
Bezel finishing	Yes



As LED panels are available in many sizes, her above an example set-up of products. Please contact Audipack for a wall mounting systems for your specific LED panel.