



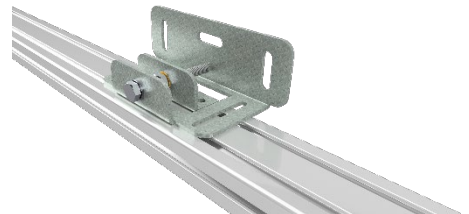
Audipack ledwall systems to the next level.

With the introduction of the LWM led wall systems beginning this year Audipack created a new vision on quality installation systems for any kind of led.

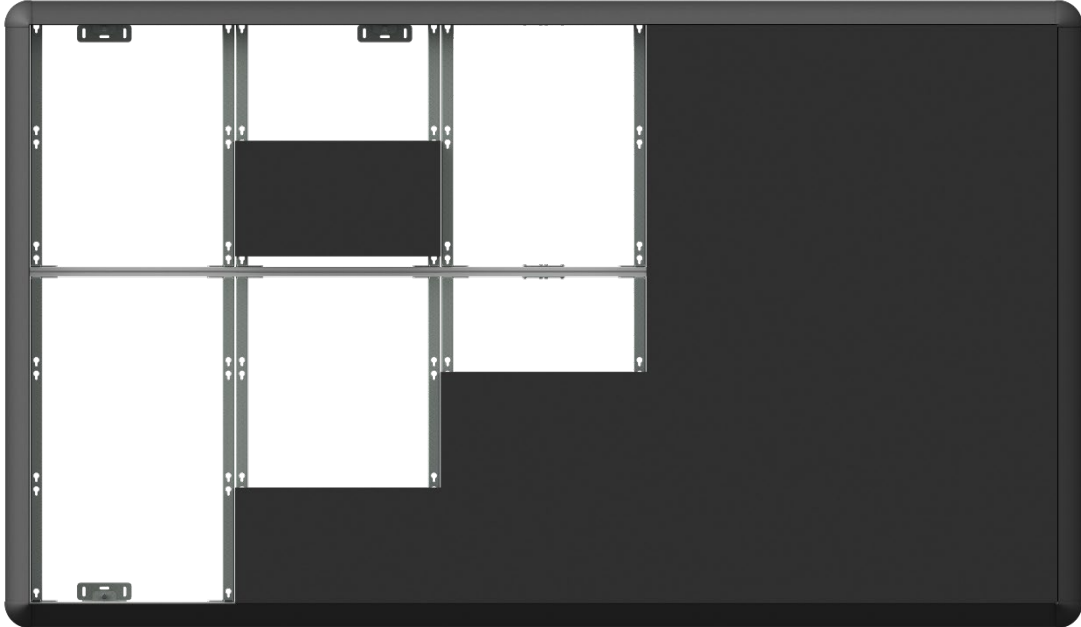
Large screen installation, fixed installed or mobile on any spot is already a well-known product range that has been designed, build and installed on very regular base.

But with the increase of applications leds are being used, the variety of brands and sizes is almost equal as the choice of a mobile phone.

With our own parametric ledwall designer software Audipack is able to generate, with specific panel details, ledwall constructions and quotation on very short notice. This enable a quick view and oversight for the integrator what to expect.



Adjustable wall anchors with micro adjustment



Benefits:

- Available for any size LED
- Indoor and outdoor suitable
- Easy installation due to micro adjustment wall levelling system
- Incl. aluminium finishing bezel in colour

Technical specifications:

- Pre-assembled / manufactured assembly set
- Aluminium / galvanized steel parts
- Removable bezel finishing

Quotation information:

- Brand & type LED panel
- Dimensions LED panel
- Total panel size
- Application (indoor / outdoor / roof top etc.)

Why choosing Audipack LWM systems?

There's a diversity of application products ranging from indoor installation, outdoor installation, indoor trolley en of course custom solutions for any situation.

To prevent "seeing the forest through the trees" Audipack has nearly covered all situations with our LWM concept.

