

## Floorplate AV Over IP Scaling Multimedia Extender with USB K+M and PoE support

FP-VINX-110P-HDMI-ENC is a two-gang form factor LAN based encoder multimedia device to extend HDMI video from a local source to a remote sink. The VINX encoder and decoder devices connect either via a direct CATx cable connection or through a Gigabit Ethernet switch in-between.

### **EXTENDER \* VIRTUAL MATRIX \* VIDEO WALL PROCESSOR \* K+M EXTENDER**

The operation of FP-VINX-110P-HDMI-ENC and VINX decoders can be expanded from a simple point-to-point application **to unlimited endpoints for the ultimate in virtual matrix switching**, digital signage and signal extension. The extenders include our Advanced EDID Management system and decoders are capable of scaling the video signal up to the maximum supported resolution of 4K UHD @ 30 Hz. **The built-in USB ports support K+M function** and can also handle USB 2.0 mass storage. The units are HDCP compliant.

One of the most popular of the unique features of VINX is the **Video Wall setup**, reducing the time needed to install a video wall to a fraction of the time needed with other systems. The feature options include gap and bezel adjustment, which can be performed in batch.

### **SILENT OPERATION**

The **efficient design** of all VINX models including the wallplate FP-VINX-110P-HDMI-ENC allows **passive, fanless cooling**. Unlike other third party models in this product category, VINX has noiseless operation, fitting even the most silent application environments.

### **BUILT-IN CROSSPOINT VIEW**

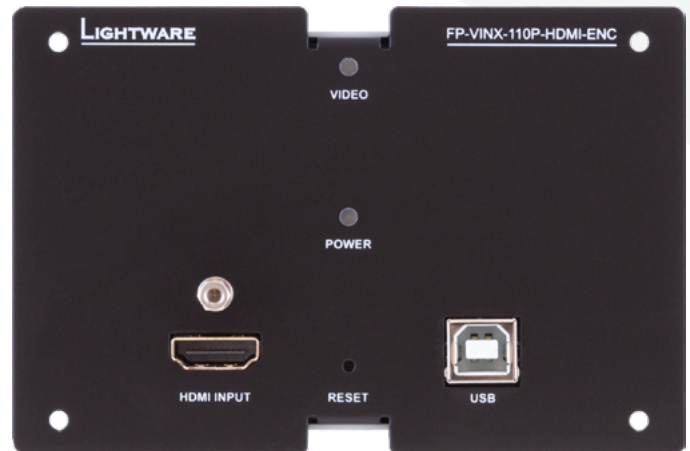
VINX series also features crosspoint view: available in both the free **Lightware Device Controller (LDC) management software** and the built-in web in the devices, the crosspoint view shows the available input and output ports of all connected encoder and decoder units, and allows switching the signals across them. The signal can also be switched to a video wall output assembled from several VINX units and acting as a single display sink. A special keyboard combination can be linked with various sources to switch signals.

### **SMART BANDWIDTH MANAGEMENT**

The built-in, selectable Video and Graphic Modes optimize streaming and compression to match the transferred media. The Variable Bitrate feature provides an even more accurate adjustment option for smart bandwidth management, adjustable between 10 Mbps and 800 Mbps.

### **REMOTE POWERING**

When connected to a **Power-over-Ethernet (PoE)** capable switch, there is no need for installing and connecting a local power supply to power the FP-VINX-110P-HDMI-ENC. Hence valuable space can be conserved which is a major advantage in wallplate applications.



## Features

- **Passive, noiseless cooling**
- **Fits in 2-gang form factor Carlon boxes suitable for wall, floorbox and lectern mounting**
- **USB 1.1 K+M (HID) extension**
- **USB 2.0 MSC (Mass Storage Class) extension**
- **Built-in website for device configuration**
- **Can be remote powered through CATx cable (PoE PD)**
- Compact and silent design in 2-gang form factor suitable for wall, floorbox and lectern mounting
- 1920x1080@120Hz/4:4:4, 4096x2160@30Hz/4:4:4 or 60Hz/4:2:0 maximum resolutions (300MHz)
- HDMI 1.4 and DVI 1.0 compliant
- Advanced EDID Management
- Intuitive control software for device configuration
- Device control via Ethernet (TCP/IP)
- Firmware upgrade through Ethernet
- HDCP 2.2 and HDCP 1.4 compliant
- Status LED for video signal detection
- Supports several embedded audio formats (including PCM, Dolby Digital and DTS)

## Specifications

Rack mountable	No
Enclosure material	1,5 mm steel
Dimensions in mm*	116,3 W x 44 D x 77 H
Dimensions in inch	4.58 W x 1.73 D x 3,3 H

\* with front panel attached

<b>Edid Management</b>	EDID emulation	Yes, advanced EDID management
	EDID memory	80 factory presets, 5 programmable
	Supported standard	EDID v1.3
<b>Networked AV output</b>	Power over Ethernet (PoE)	Yes, (IEEE 802.3af)
	Compliance	1000Base-T (IEEE 802.3ab)
	HDCP compliance	HDCP 1.4
	Transferred signals	Video, Audio, RS-232, Infrared, Ethernet, USB
	Color space	RGB, YCbCr
	Video delay	2,2 frames (end-to-end)
	Supported resolutions at 8 bits/color *	up to 4096x2048@30Hz (4:4:4) or 4096x2048@60Hz (4:2:0)
		up to 3840x2160@30Hz (4:4:4) or 3840x2160@60Hz (4:2:0)
1920x1080@60Hz (4:4:4) up to 12 bits/color		
Audio formats	All HDMI2.0 audio formats	

\* All standard VESA and CEA resolutions up to 300MHz (HDMI1.4) and other custom resolutions up to 300Mhz are supported.

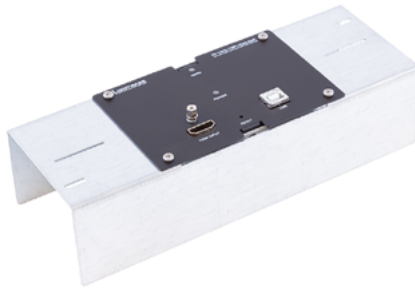
<b>Ethernet port</b>	Connector type	RJ45 female connector
	Ethernet data rate	10/100/1000Base-T, full duplex with autodetect
	Power over Ethernet (PoE)	Supported
<b>USB port</b>	Connector type	B-type receptacle
	USB compliance	USB 2.0
	Device class	HID / Mass storage

## Compatible Lightware mounting bracket kit

For a list of compatible industry standard floor boxes, please refer to the downloadable [User Manual](#).

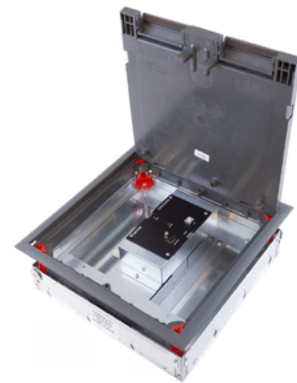
### FP-VINX-110P HDMI-ENC-MKM

Part Number:  
91810026



### FP-VINX-110P HDMI-ENC-MKS

Part Number:  
91810027



### FP-VINX-110P HDMI-ENC-GES9

Part Number:  
91810029



### FP-VINX-110P HDMI-ENC-GES4

Part Number:  
91810028

