



Dante 2-Channel XLR Wall-Plate, White

500558-WH



Overview

The Dante 2-Channel XLR Wall-Plate, White (Model: 500558-WH) permits non-Dante compatible analog audio equipment to interface with Dante compatible professional audio equipment. The unit allows the transmission of full-range (20Hz to 20KHz) balanced or unbalanced two channel analog audio signals on XLR over the network to Dante equipment. It is powered using the PoE from any PoE network switch. The Dante 2 channel XLR Interface is designed to be compatible with standard double gang US wall boxes.

Applications

- Conference Rooms
- Education
- Retail Stores
- Hotels
- Restaurants
- Conference Center
- Hospitals

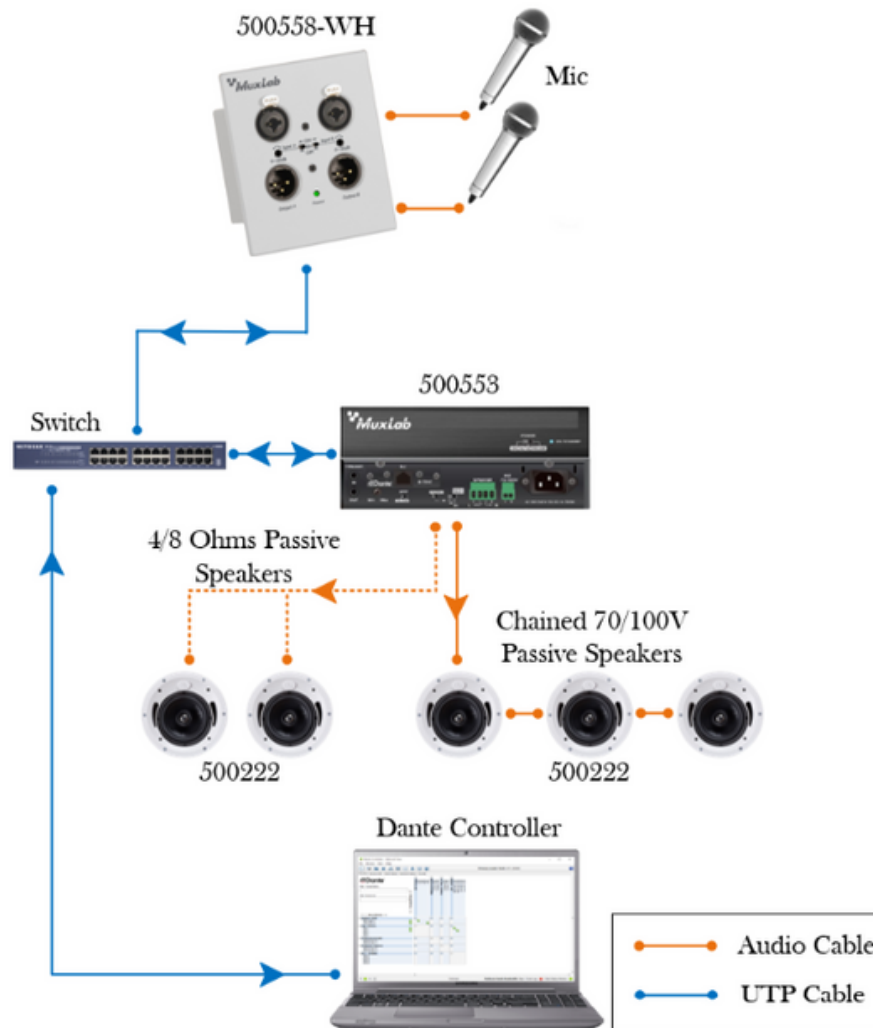
Key Features

- Built-in Dante module
- Supports PoE power from PoE network switches
- Features 2 XLR balanced inputs and 2 XLR balanced outputs
- Features 2 channels Dante input and 2 channels Dante output
- Audio sampling rate supports 48kHz (24bit)
- The input supports 48VDC phantom power supply
- Power supply and audio transmission integrated in one cable
- Designed to be compatible with standard double gang US wall boxes.
- Supports PoE (IEEE802.3af)
- Supports AES67 RTP audio transport

Specification

XLR Impedance Input	Balance 20k Ohm
XLR Impedance Output	Balance 100 Ohm
Dante interface	RJ45 interface, with PoE
Frequency response	20Hz-20kHz
Sampling rate	48kHz 24bit
Floor noise	-90dB
Channel Isolation	100dB @ 1kHz
Form Factor	2 Gang US
Power consumption	2W
THD + N	<0.005% @4dBu
Operating temperature	0°C ~ +40°C
Dimensions (LxWxH)	123.5mm × 79mm × 35mm
Net Weight	156g
Warranty	2 years
Order Information	500558-WH Dante 2-Channel XLR Wall-Plate, White (UPC: 627699015582)

Diagram



Dante 2-Channel XLR Wall-Plate, White
500558-WH

Follow us: [f](#) [t](#) [in](#) [v](#)

2321 Cohen | St-Laurent, H4R 2N7 | Québec, Canada Tel: 514-905-0588 | Fax:
514-905-0589 | Toll free: 1-877-689-5228 info@muxlab.com |
salesteam@muxlab.com | www.muxlab.com