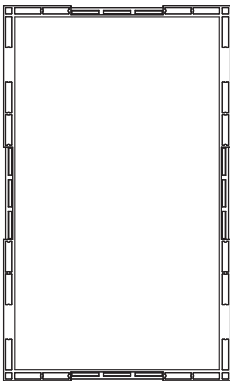
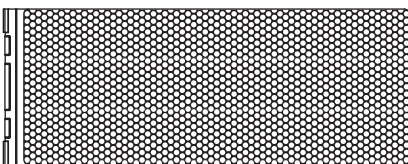


1

1 x



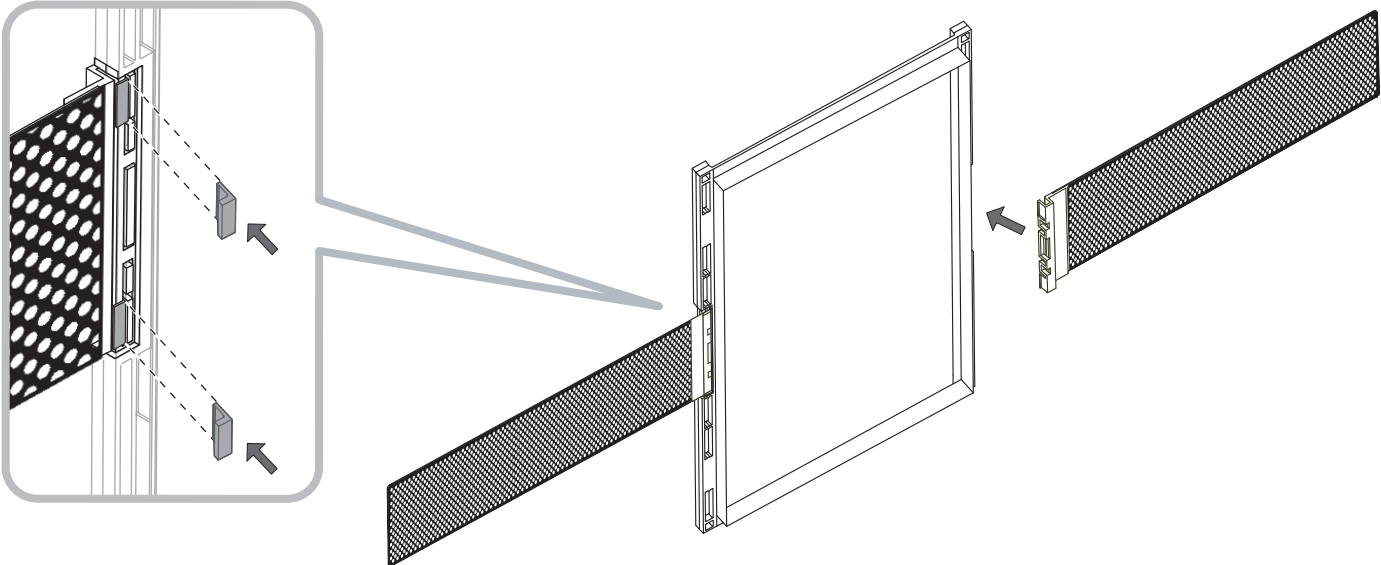
2 x



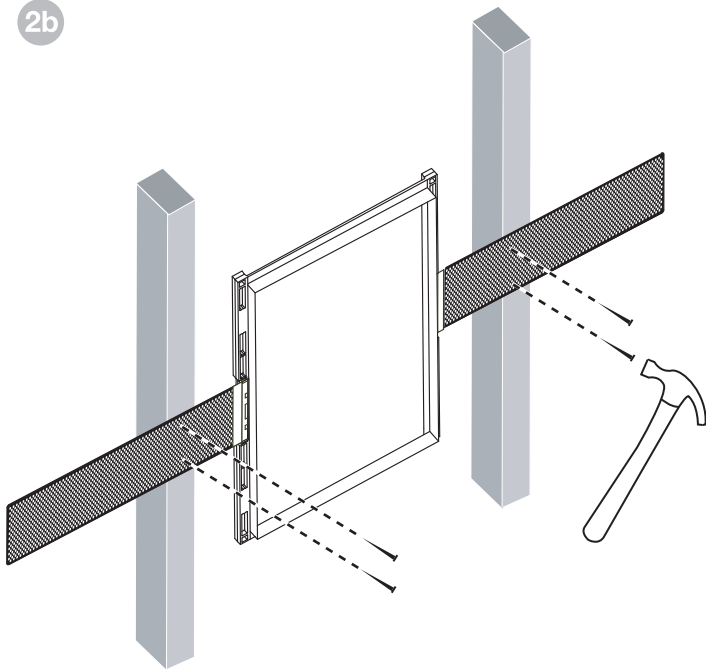
4 x



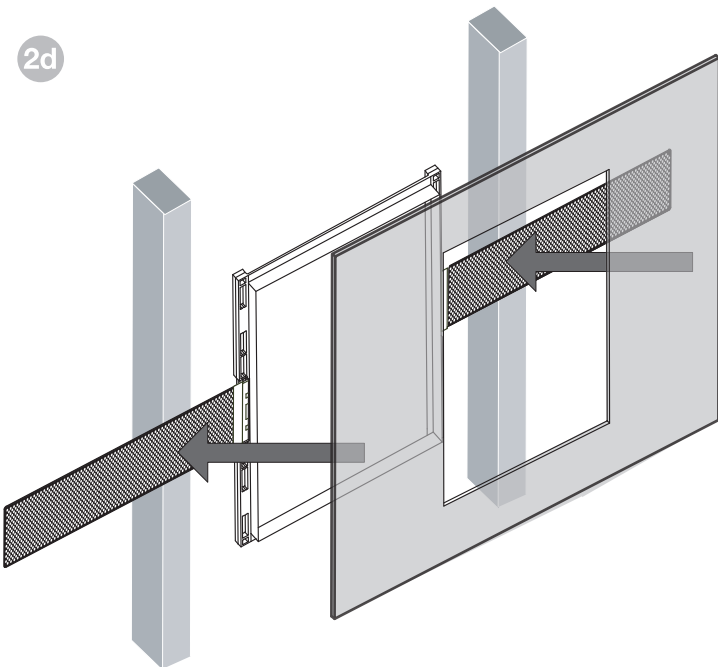
2a



2b

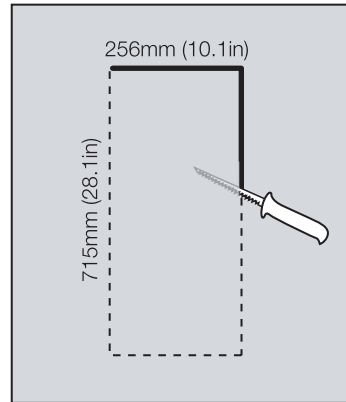


2d

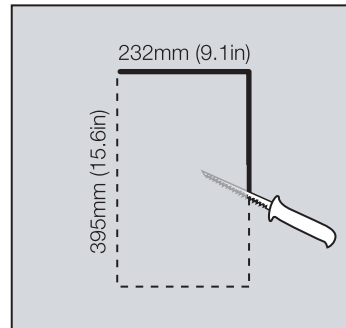


2c

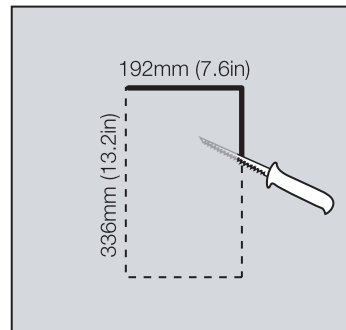
CWM7.3



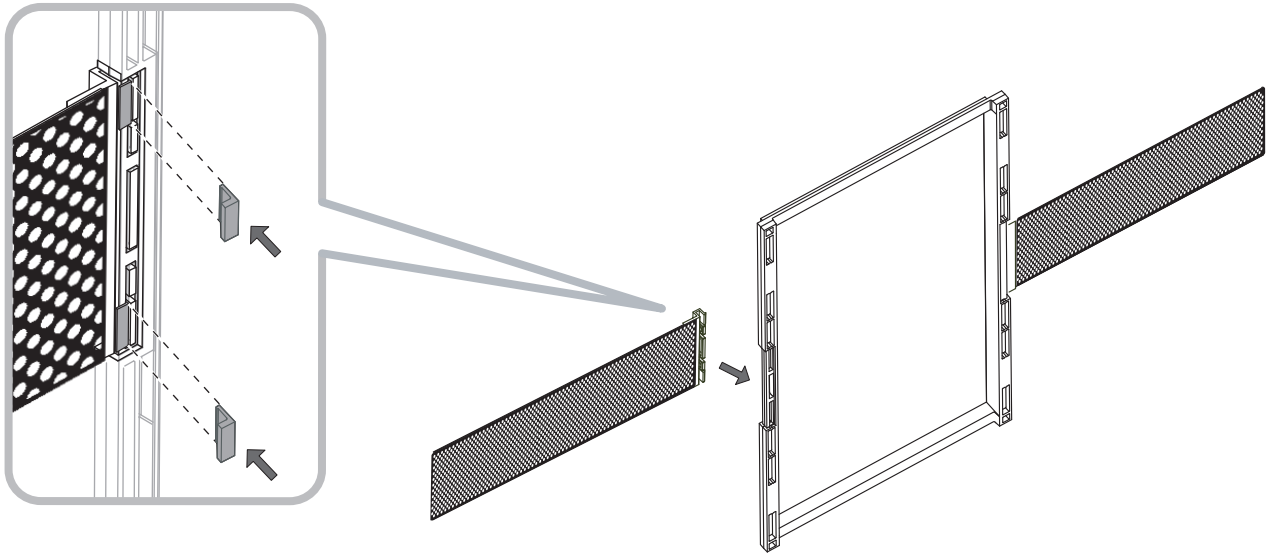
CWM7.4



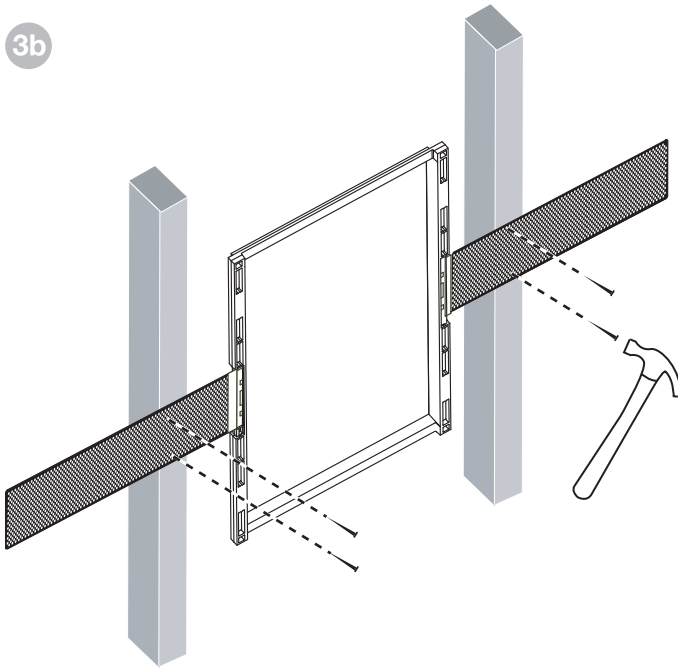
CWM7.5



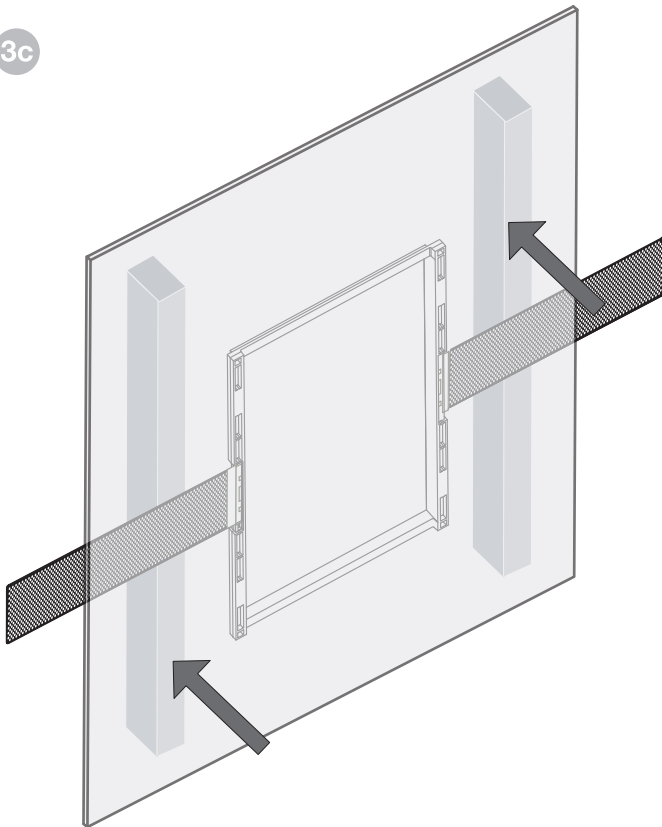
3a



3b



3c



Bowers&Wilkins

B&W Group Ltd
Dale Road
Worthing West Sussex
BN11 2BH England

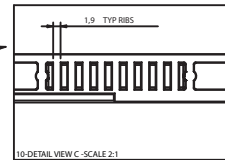
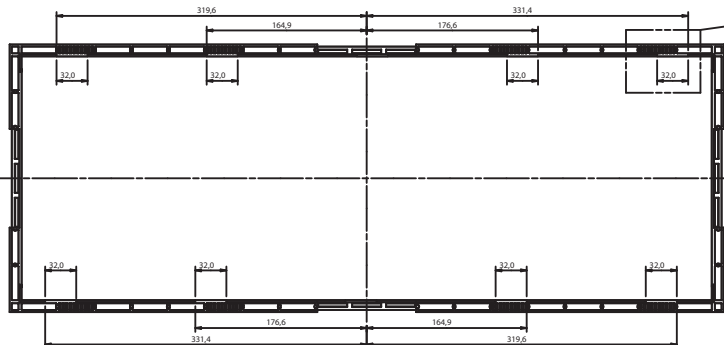
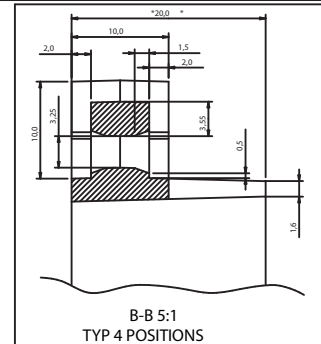
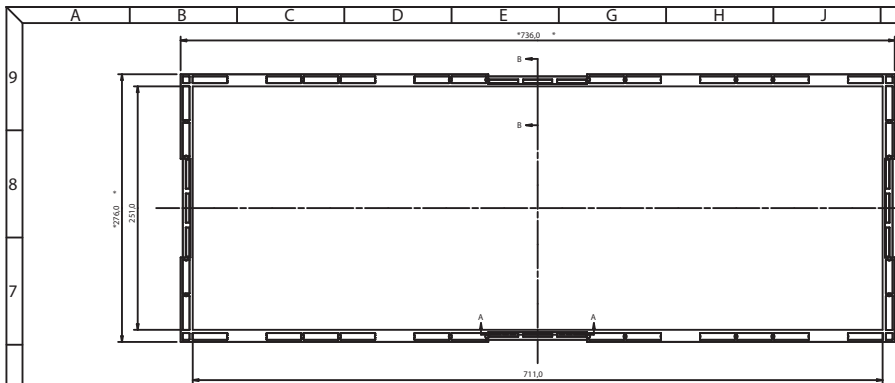
T +44 (0) 1903 221 800
F +44 (0) 1903 221 801
info@bwgroup.com
www.bowers-wilkins.com

B&W Group (UK Sales)
T +44 1903 221 500
E uksales@bwgroup.com

B&W Group North America
T +1 978 664 2870
E marketing@bwgroupusa.com

B&W Group Asia Ltd
T +852 3 472 9300
E info@bwgroup.hk

Copyright © B&W Group Ltd. E & OE
Printed in China



- MOLDING PROCESS NOTES**
1. WRITING APPLICABLE MUST BE OBTAINED FROM B&W FOR ANY NON CONFORMITY OF THE PART TO THIS DRAWING
 2. LOCATIONS OF GATE, ELECTORS & PARTING LINES TO BE APPROVED IN WRITING BY B&W PRIOR TO TOOLING
 3. ALL SURFACES TO BE FREE OF SINK MARKS, FLASHING OR ANY OTHER IMPERFECTIONS
 4. ALL SHARP EDGES CORNERS RIBS MAX UNLESS STATED
 5. **DRAFT ANGLE 1.5° UNLESS STATED**
 6. DIMENSIONS FOR INSPECTION ARE INDICATED THROUGHOUT
 7. PLEASE REFER TO TOLERANCE TABLE SHOWN BELOW
 8. STRAIGHT EDGES TO BE STRAIGHT OVER WHOLE LENGTH BY TOLERANCE 0.300S X EDGE LENGTH AND NOT EXCEED 0.2 OVER ANY 25.0 DISTANCE
 9. FLAT SURFACES TO BE FLAT OVER WHOLE SURFACE BY 0.005 X LONGEST EDGE LENGTH AND NOT EXCEED 0.2 OVER ANY 25.0 SECTION
 10. CIRCULAR OR PART CIRCULAR EDGES AND FACES TO BE ROUNDED TO TOLERANCE 0.06 X RADIUS AND NOT EXCEED 0.2 OVER ANY 25.0 DISTANCE
 11. THE DRAWING NUMBER, DATE INDICATOR AND RECYCLE SYMBOLS MUST BE ADDED TO THE TOOL IN POSITIONING AGREED BY B&W
 12. THIS 2-D DRAWING IS FOR CHECKING PURPOSES ONLY UNLESS STATED
 13. ALL NOTES APPLY UNLESS OTHERWISE STATED
 14. ALL UNDIMENSIONED 3-D FEATURES ARE SUBJECT TO THE RELEVANT PROCESS TOLERANCES SHOWN ABOVE
 15. ALL DIMENSIONS SHOWN ARE + DRAFT UNLESS OTHERWISE INDICATED

| PLASTIC PROCESS TOLERANCES | |
|----------------------------|-----------|
| NOMINAL DIMENSION | TOLERANCE |
| 1 TO 4 MAX | ±0.1 |
| 4 TO 16 MAX | ±0.2 |
| 16 TO 63 MAX | ±0.3 |
| 63 TO 250 MAX | ±0.5 |
| 250 TO 1000 MAX | ±0.8 |
| ANGLES | ±0.8° |

| ISSUE HISTORY | | |
|---------------|----------------|-----|
| ISS | ECR/SAN NUMBER | REQ |
| 3 | PDC3307 | RL |
| DRN | DATE | CKD |
| RM | 13.8.09 | |

ISSUE DETAILS:
8-OFF 32.0 WIDE CUT-OUTS IN UPSTAND ADDED; 8-OFF SETS OF 1.9 TYP RIBS ADDED FOR DOG LANDING

| ISS | ECR/SAN NUMBER | REQ |
|-----|----------------|-----|
| 2 | | |
| DRN | DATE | CKD |
| RM | 26.6.09 | |

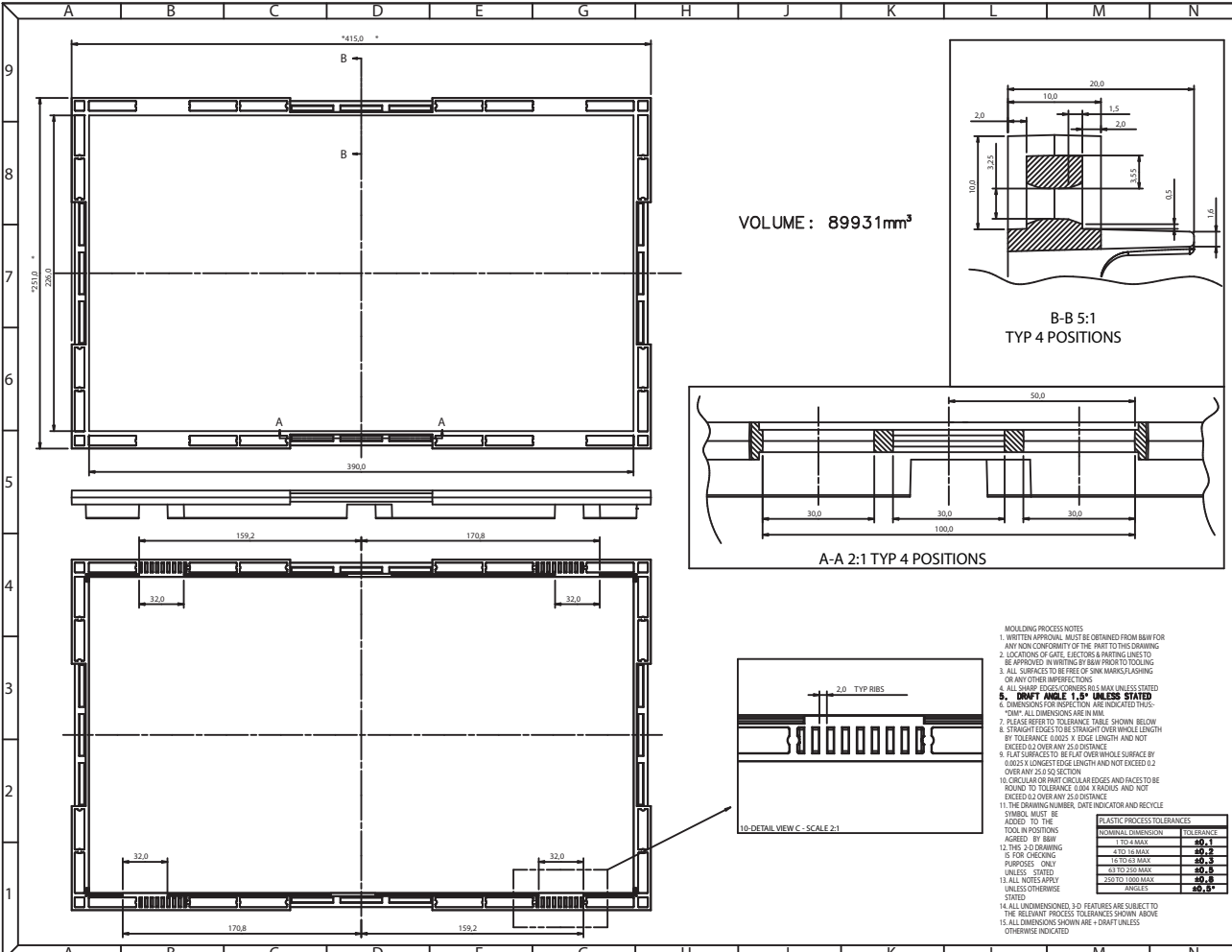
ISSUE DETAILS:
RADS REMOVED FROM FRAME EDGE;
DRAWING RELEASED

VOLUME: 146605mm³

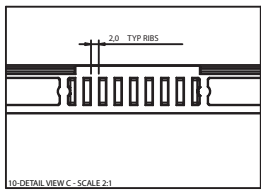
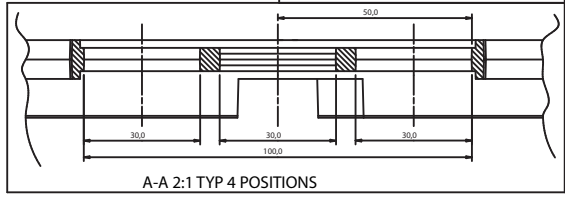
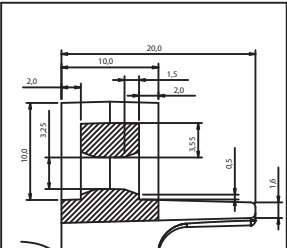
A-A 2:1 TYP 4 POSITIONS

| A | B | C | D | E | G | H | J | K | L | M | N | | | | |
|---------------------------|---|-----------------------------------|---|---------------------------|---|---|---|---|---|---|---|-------------------------------|--------------------------------------|----------------|---|
| MATERIAL BLACK H.I.P.S | | FINISH FREE OF MACHINING MARKS | | TITLE PMK CWM7.3 FRAME | | | | | | | | FIRST DRAWN BY PAUL GOCHER | COPYRIGHT © 2009 B&W GROUP LTD | DOC PART NO. | |
| | | | | | | | | | | | | DATE 22/6/09 | SCALE 1:2 | DRG SIZE A1 | PART NO. MM06548 3-D DATA FILE NO E0032 -ISS- (3) 2-D DRG. NO. E0032-1-1 -ISS (3) |

IF IN DOUBT ASK
ALL COMPONENTS MUST BE RoHS COMPLIANT



VOLUME : 89931mm³



- MOLDING PROCESS NOTES
1. WRITTEN APPROVAL MUST BE OBTAINED FROM B&W FOR ANY NON COMPONENT OF THE PART TO THIS DRAWING
 2. LOCATIONS OF GATE, EJECTORS & PARTING LINES TO BE APPROVED IN WRITING BY B&W PRIOR TO TOOLING
 3. ALL SURFACES TO BE FREE OF SWIRL MARKS, LASHING OR ANY OTHER IMPERFECTIONS
 4. ALL SHARP EDGES & CORNERS SHALL MAX UNLESS STATED
 5. **DRAFT ANGLE 1.5° UNLESS STATED**
 6. DIMENSIONS FOR POSITION, ARE INDICATED AS: "DIM": ALL DIMENSIONS ARE IN MM.
 7. PLEASE REFER TO TOLERANCE TABLE SHOWN BELOW
 8. STRAIGHT EDGES TO BE STRAIGHT OVER WHOLE LENGTH BY TOLERANCE 0.025 X EDGE LENGTH AND NOT EXCEED 0.2 OVER ANY 25.0 DISTANCE
 9. FLAT SURFACES TO BE FLAT OVER WHOLE SURFACE BY 0.025 X LONGEST EDGE LENGTH AND NOT EXCEED 0.2 OVER ANY 25.0 SQ. SECTION
 10. CIRCULAR OR PART CIRCULAR EDGES AND RACES TO BE ROUND TO TOLERANCE 0.20 X RADIUS AND NOT EXCEED 0.2 OVER ANY 25.0 DISTANCE
 11. THE DRAWING NUMBER, DATE INDICATOR AND RECYCLE SYMBOL MUST BE ADDED TO THE TOOL INFORMATION
 12. THIS 3-D DRAWING IS FOR CHECKING PURPOSES ONLY UNLESS STATED
 13. ALL NOTES APPLY UNLESS OTHERWISE STATED
 14. ALL UNDIMENSIONED 3-D FEATURES ARE SUBJECT TO THE RELEVANT PROCESS TOLERANCES SHOWN ABOVE
 15. ALL DIMENSIONS SHOWN ARE - DRAFT UNLESS OTHERWISE INDICATED

| PLASTIC PROCESS TOLERANCES | |
|----------------------------|-----------|
| DIMENSION / DIMENSION | TOLERANCE |
| 1 TO 4 MAX | ±0.1 |
| 4 TO 16 MAX | ±0.2 |
| 16 TO 64 MAX | ±0.3 |
| 64 TO 250 MAX | ±0.5 |
| 250 TO 1000 MAX | ±0.8 |
| 1000 TO 10000 MAX | ±1.0 |

| ISSUE HISTORY | | |
|---------------|----------------|-----|
| ISS | ECR/SAN NUMBER | REQ |
| 5 | PDC3307 | RL |
| DRN | DATE | CKD |
| RM | 13.8.09 | |

ISSUE DETAILS:

4-OFF 32.0 WIDE CUT-OUTS IN UPSTAND ADDED; 4-OFF SETS OF 2.0 TYP RIBS ADDED FOR DOG LANDING

| ISS | ECR/SAN NUMBER | REQ |
|-----|----------------|-----|
| 4 | | |
| DRN | DATE | CKD |
| RM | 9.6.09 | |

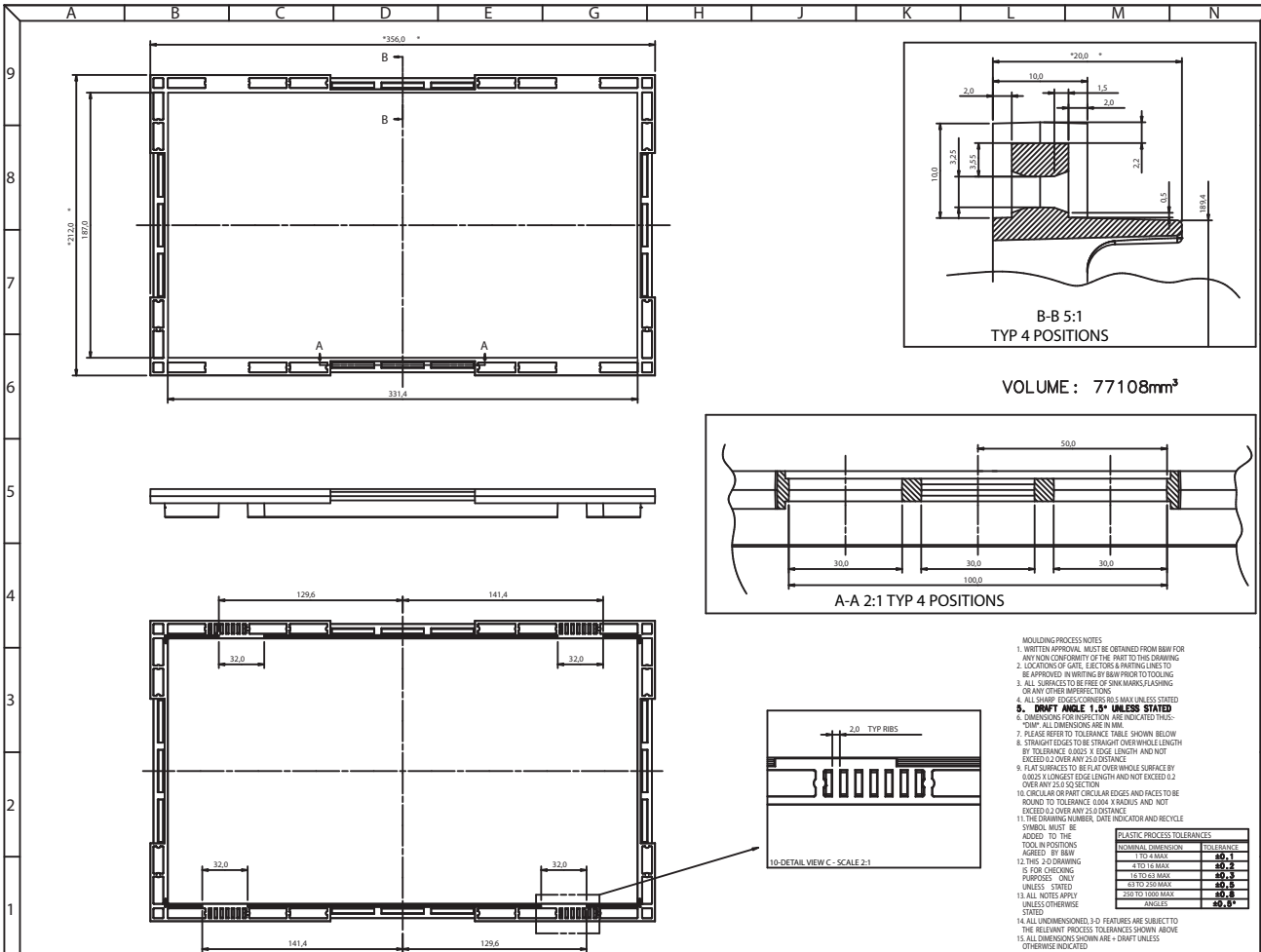
ISSUE DETAILS:

DRAWING RELEASED - NO CHANGES TO PART

IF IN DOUBT ASK
ALL COMPONENTS MUST BE RHHS COMPLIANT

| A | B | C | D | E | G | H | J | K | M | N | |
|---------------------------|---|-----------------------------------|---|---------------------------|---|-------------------------------|---|--|---|----------------------------------|--|
| MATERIAL BLACK H.I.P.S | | FINISH FREE OF MACHINING MARKS | | TITLE PMK CWM7.4 FRAME | | FIRST DRAWN BY PAUL GOCHER | | COPYRIGHT C O 2009 B&W GROUP LTD | | DOC PART NO. | |
| DATE 20/5/09 | | SCALE 3:4 | | DRG SIZE A1 | | PART NO. FF25358 | | 3-D DATA FILE NO. A9905 -ISS- 4 | | 2-D DRG. NO. A9905-1-1 -ISS 5 | |





| ISSUE HISTORY | | |
|---------------|----------------|-----|
| ISS | ECR/SAN NUMBER | REQ |
| 5 | PDC3307 | RL |
| DRN | DATE | CKD |
| RM | 13.8.09 | |

ISSUE DETAILS:
 4-OFF 32.0 WIDE CUT-OUTS
 IN UPSTAND ADDED; 4-OFF
 SETS OF 2.0 TYP RIBS
 ADDED FOR DOG LANDING

| | | |
|-----|----------------|-----|
| ISS | ECR/SAN NUMBER | REQ |
| 4 | | |
| DRN | DATE | CKD |
| RM | 9.6.09 | |

ISSUE DETAILS:
 DRAWING RELEASED -
 NO CHANGES TO PART

- MOLDING PROCESS NOTES
1. WRITTEN APPROVAL MUST BE OBTAINED FROM BAW FOR ANY NON-COMPLIANCE OF THE PART TO THE DRAWING
 2. LOCATION OF GATE, ELECTOR & PARTING LINES TO BE APPROVED IN WRITING BY BAW PRIOR TO TOOLING
 3. ALL SURFACES TO BE FREE OF ZINC MARRS, FLASHING OR ANY OTHER IMPERFECTIONS
 4. ALL SHARP EDGES CORNERED TO MAX UNLESS STATED
 5. DRAFT ANGLE 1.5° UNLESS STATED
 6. DIMENSIONAL TOLERANCES ARE INDICATED THEREAS "DIM" ALL DIMENSIONS ARE IN MM
 7. PLEASE REFER TO TOLERANCE TABLE SHOWN BELOW
 8. STRAIGHT EDGES TO BE STRAIGHT OVER WHOLE LENGTH BY TOLERANCE 0.040 X EDGE LENGTH AND NOT EXCEED 0.2 OVER ANY 25.0 DISTANCE
 9. FLAT SURFACES TO BE FLAT OVER WHOLE SURFACE BY 0.020 X LONGEST EDGE LENGTH AND NOT EXCEED 0.2 OVER ANY 25.0 SQ SECTION
 10. CIRCULAR OR PART CIRCULAR EDGES AND FACES TO BE ROUND TO TOLERANCE 0.040 X RADIUS AND NOT FACED 0.2 OVER ANY 25.0 DISTANCE
 11. THE DRAWING NUMBER, DATE INDICATOR AND RECYCLE SYMBOL MUST BE ADDED TO THE TOOL POSTING
 12. THIS 2-D DRAWING IS FOR CHECKING PURPOSES ONLY UNLESS STATED
 13. ALL NOTES APPLY UNLESS OTHERWISE STATED
 14. ALL UNDIMENSIONED 3-D FEATURES ARE SUBJECT TO THE RELEVANT PROCESS TOLERANCES SHOWN ABOVE
 15. ALL DIMENSIONS SHOWN ARE - DRAFT UNLESS OTHERWISE INDICATED

| PLASTIC PROCESS TOLERANCES | |
|----------------------------|-----------|
| NOMINAL DIMENSION | TOLERANCE |
| 0.5 TO 1.0 MAX | ±0.1 |
| 1.0 TO 16 MAX | ±0.2 |
| 16 TO 63 MAX | ±0.3 |
| 63 TO 250 MAX | ±0.4 |
| 250 TO 1000 MAX | ±0.5 |



| MATERIAL | FINISH | TITLE |
|---------------|-------------------------|------------------|
| BLACK H.I.P.S | FREE OF MACHINING MARKS | PMK CWM7.5 FRAME |

| FIRST DRAWN BY | COPYRIGHT C | DOC PART NO. |
|----------------|-------------|--------------|
| PAUL GOCHER | 2009 | |
| DATE | SCALE | DRG SIZE |
| 20/5/09 | 3:4 | A1 |

| 3-D DATA FILE NO | 2-D DRG. NO. |
|------------------|--------------|
| A9944 -ISS- 4 | A9944-1-1 |

| PART NO. | ISS | REQ |
|----------|-----|-----|
| MM06467 | 4 | 5 |