

VWFC A2357-L

VIDEO WALL BOLT DOWN FLOOR-TO-CEILING MOUNT, MODULAR 2X3

FOR 50"-57" SCREENS, LANDSCAPE

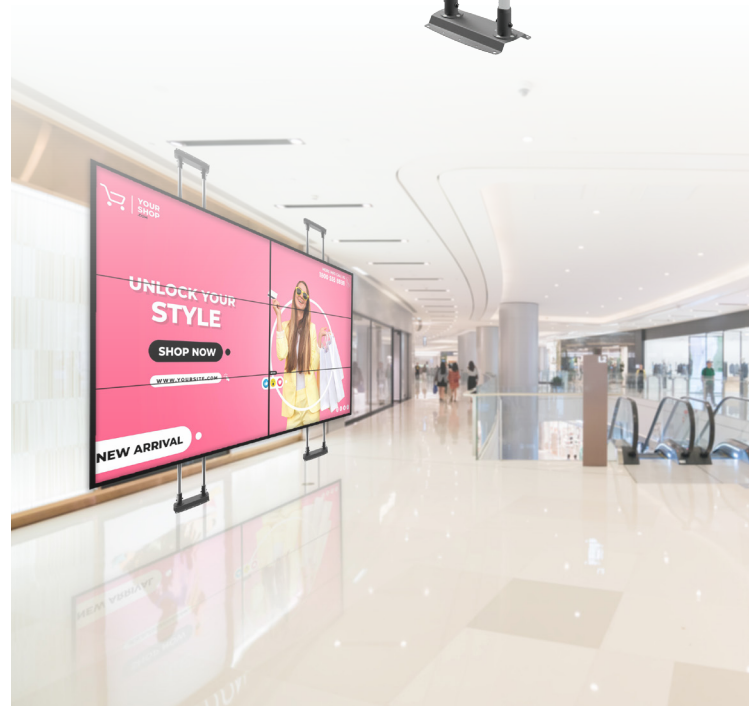
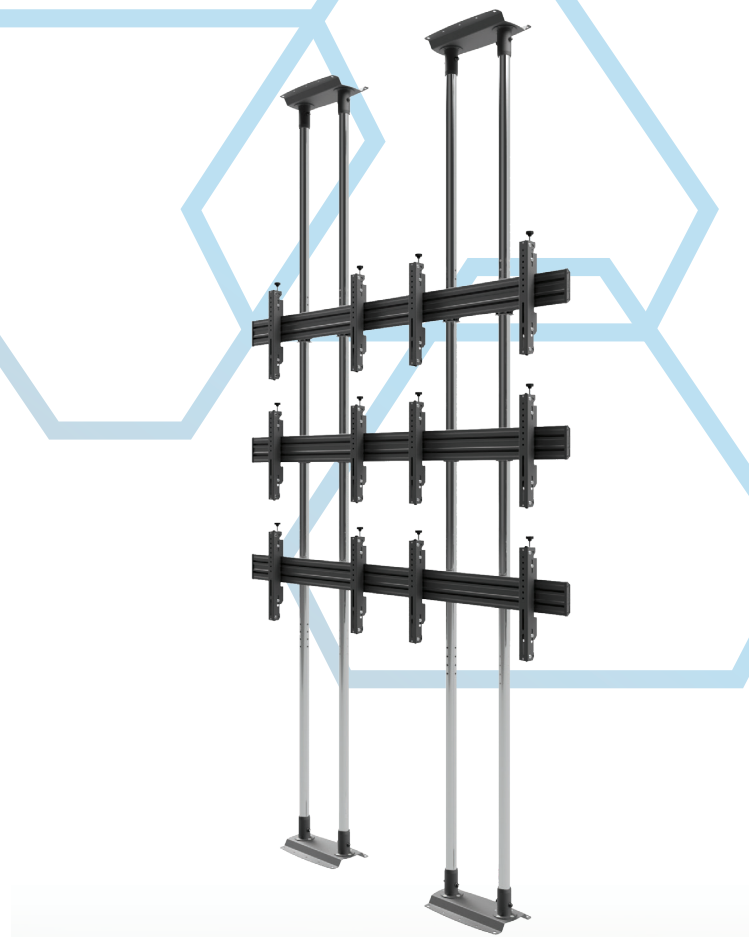
With its modular design, VWFC A2357-L allows the installation of six 50"-57" screens in 2x3 landscape orientation. The design is characterised by durability, high quality and aesthetics. The video wall attached to the ceiling and floor allows a safe solution to be built in accordance with the expectations of the most demanding customers. VWFC A2357-L is used in places where there is a need for dynamic and effective communication with the audience, while ensuring the maximum safety.

FEATURES

- High quality and aesthetics
- Durable design
- Screen carrying plates made of aluminum
- Up to 6 x 50"-57" screens
- Independent 8-point micro-adjustment ensures perfect alignment of screens without the use of tools
- Screen protected against being slid out accidentally
- Integrated cable management system for smart installation
- Screws protecting against accidental or unauthorised removal of the screen

PRODUCT SPECIFICATIONS

Short index	VWFC A2357-L
Category	Video Wall Bolt Down Floor-To-Ceiling Mounts
Product group	Video Wall & Menu Board Mounts
Colour	Black
Warranty	Limited 5-years
Number of screens	6
Minimum screen size	50"
Maximum screen size	57"
Maximum load	210 kg
VESA Mounting Compatibility	100x100 up to 600x400



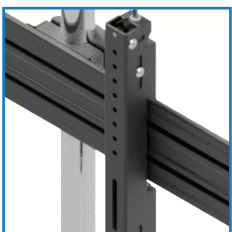
50"-57"



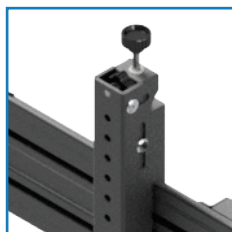
100x100
600x400



210 kg



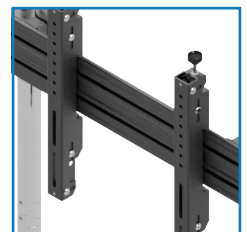
Independent 8-point micro-adjustment ensures perfect alignment of screens without the use of tools



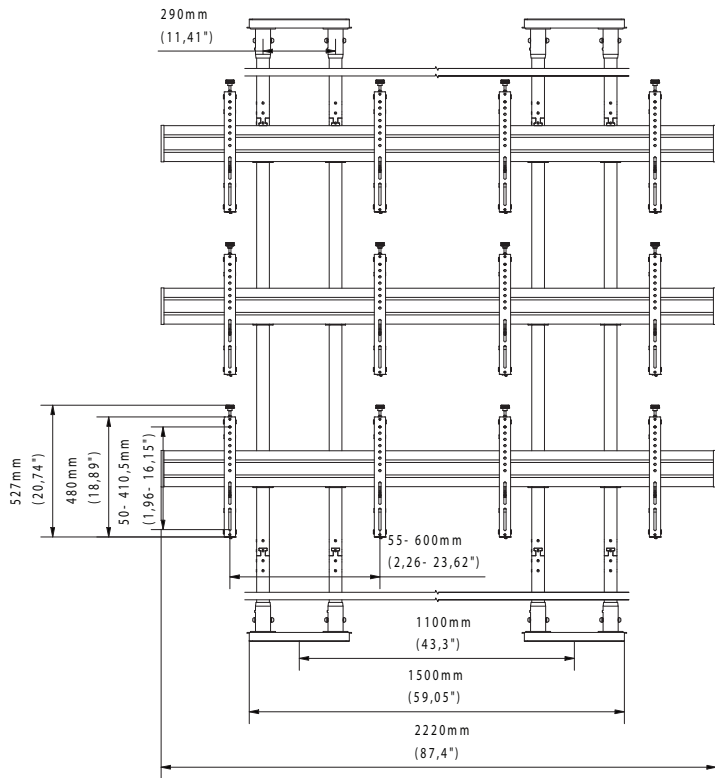
Security screws to prevent accidental or unauthorised removal of the screen



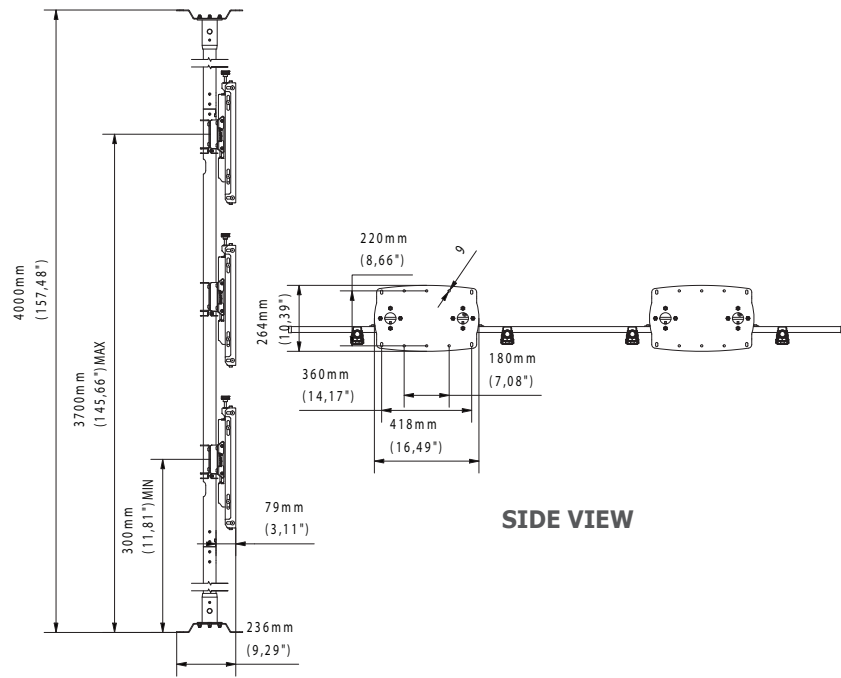
Cable management



Protection against uncontrolled removal of the screen



FRONT VIEW



TOP VIEW

SIDE VIEW

TECHNICAL SPECIFICATIONS

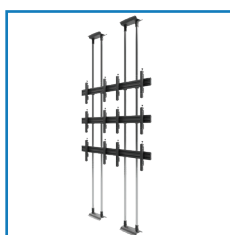
Product dimensions	W: 264 mm D: 2220 mm H: 4000 mm (W: 10,39" D: 87,40" H: 157,48")
Product weight	105 kg (231 lb)
Max. distance from mounting surface	3700 mm (145,67")
Min. distance from mounting surface	300 mm (11,81")
Max. mounting pattern	600 mm x 410,5 mm
Min. mounting pattern	55 mm x 50 mm

LOGISTICS DATA

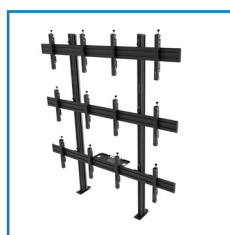
SAP INDEX	EAN CODE	COLOUR
WUSU-VWFA2357-L	5902841112735	BLACK

HS Code (Harmonized System): 732690, HTS Code (Harmonized Tariff Schedule): 7326909890, Country of Origin: Poland

ACCESSORIES AND RELATED PRODUCTS



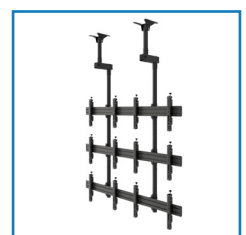
VWFA2347-L



VWSA2357-L



VWTA2357-L



VWCA2357-L

2021 - EDBAK Sp. z o.o. All rights reserved.
The information included in the specification reflects the current technical specifications at the time of printing. We reserve the right to modify technical or physical specifications without prior notice. EDBAK name and EDBAK logo are registered trademarks of EDBAK Sp. z o.o. All EDBAK images and symbols are sole property of EDBAK Sp. z o.o. Edbak shall not be held liable for any loss or damage caused by incorrect installation or mounting. Copying this specification in whole or in part is only allowed after obtaining written consent from EDBAK Sp. z o.o.
VWFA2357-L-210901-EN