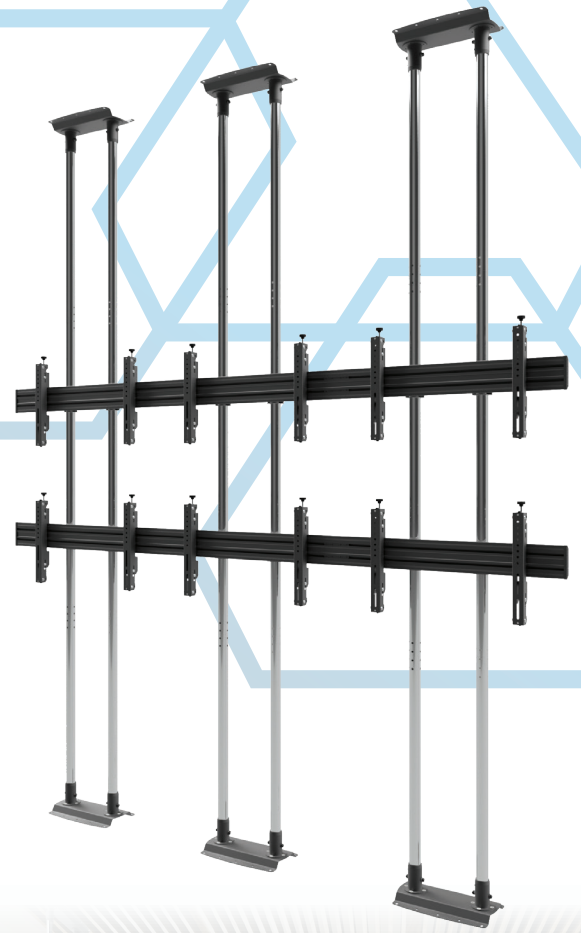


# VWFC A3257-L

## VIDEO WALL BOLT DOWN FLOOR-TO-CEILING MOUNT, MODULAR 3X2

FOR 50"-57" SCREENS, LANDSCAPE

With its modular design, VWFC A3257-L allows the installation of six 50"-57" screens in 3x2 landscape orientation. The design is characterised by durability, high quality and aesthetics. The video wall attached to the ceiling and floor allows a safe solution to be built in accordance with the expectations of the most demanding customers. VWFC A3257-L is used in places where there is a need for dynamic and effective communication with the audience, while ensuring the maximum safety.

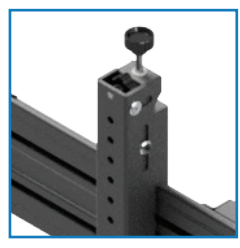


### FEATURES

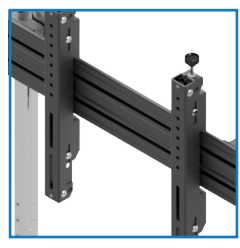
- High quality and aesthetics
- Durable design
- Screen carrying plates made of aluminum
- Up to 6 x 50"-57" screens
- Independent 8-point micro-adjustment ensures perfect alignment of screens without the use of tools
- Screen protected against being slid out accidentally
- Integrated cable management system for smart installation
- Screws protecting against accidental or unauthorised removal of the screen

### PRODUCT SPECIFICATIONS

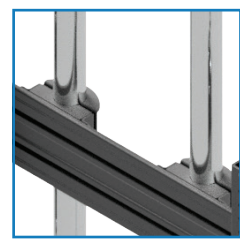
Short index	VWFC A3257-L
Category	Video Wall Bolt Down Floor-To-Ceiling Mounts
Product group	Video Wall & Menu Board Mounts
Colour	Black
Warranty	Limited 5-years
Number of screens	6
Minimum screen size	50"
Maximum screen size	57"
Maximum load	310 kg
VESA Mounting Compatibility	100x100 up to 600x400



Security screws to prevent accidental or unauthorised removal of the screen



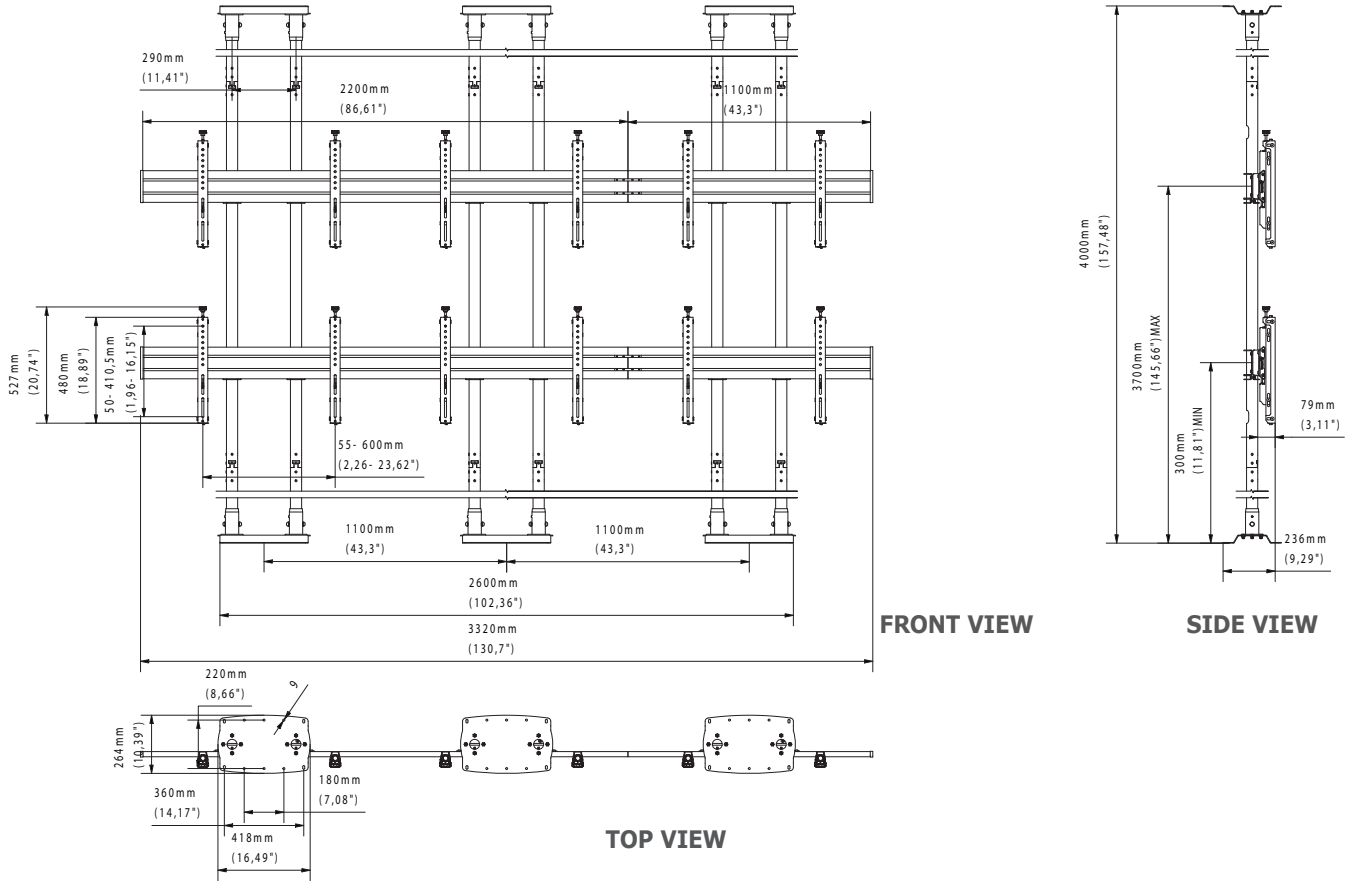
Protection against uncontrolled removal of the screen



Cable management



Independent 8-point micro-adjustment ensures perfect alignment of screens without the use of tools



## TECHNICAL SPECIFICATIONS

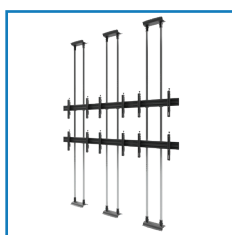
Product dimensions	W: 264 mm D: 3320 mm H: 4000 mm (W: 10,39" D: 130,71" H: 157,48")
Product weight	130 kg (287 lb)
Max. distance from mounting surface	3700 mm (145,67")
Min. distance from mounting surface	300 mm (11,81")
Max. mounting pattern	600 mm x 410,5 mm
Min. mounting pattern	55 mm x 50 mm

## LOGISTICS DATA

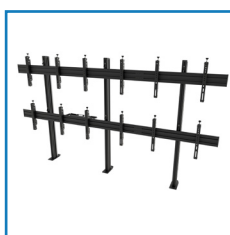
SAP INDEX	EAN CODE	COLOUR
WUSU-VWFA3257-L	5902841112759	BLACK

HS Code (Harmonized System): 732690, HTS Code (Harmonized Tariff Schedule): 7326909890, Country of Origin: Poland

## ACCESSORIES AND RELATED PRODUCTS



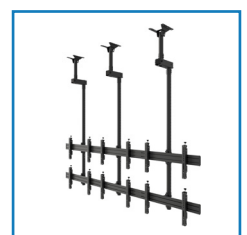
VWFCA3247-L



VWSA3257-L



VWTA3257-L



VWCA3257-L