

MX-HDMI-3D-IB

HDMI input board including 4K, 3D and Deep Color

Features

- HDMI 1.4a; DVI and HDCP compliant
- 4K x 2K @ 30 Hz, 1080p @ 120 Hz, 2560 x 1600, 2048 x 2048, HD video resolutions and all 3D formats are supported
- Available models: analog stereo audio option (MX-HDMI-3D-IB-A) or digital S/PDIF audio option (MX-HDMI-3D-IB-S) or without audio (MX-HDMI-3D-IB)
- Advanced EDID Management and Frame Detector
- Pixel Accurate Reclocking
- Dolby TrueHD and DTS-HD Master Audio
- 36-bit Deep Color support

MX-HDMI-3D-IB provides 8 channel HDMI 1.4a inputs with DVI and HDCP compliance supporting all 3D formats as well. The input board is available with audio option connectors: digital S/PDIF or analog stereo connectors are available for advanced audio functions (HDMI embedded audio signals are managed by the board as well). The MX-HDMI-3D-IB without the digital or analog audio option can handle HDMI embedded audio as well. Advanced professional functions such as HDCP enable/disable mode, Pixel Accurate Reclocking, Advanced EDID Management and Frame Detector are integrated providing the highest level of setup and usage.

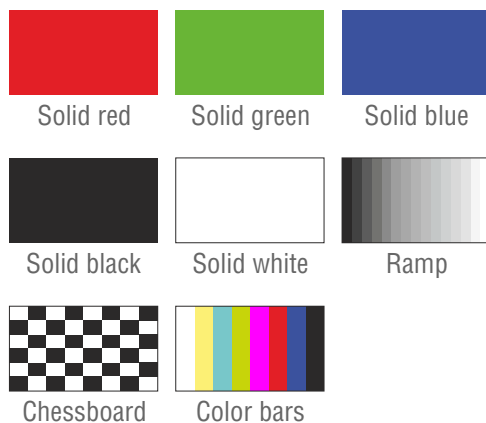
Digital S/PDIF audio option:

- S/PDIF breakout for every port
- Bi-directional configurable S/PDIF connectors: audio can be de-embedded from the HDMI signals or audio can be embedded (or replaced) to the HDMI signal

Analog stereo audio option:

- Bi-directional configurable analog stereo port with 5 pole phoenix connector
- Stereo PCM audio up to 96 kHz can be de-embedded from the HDMI signals
- Digitalized audio (PCM 48 kHz) can be embedded (or replaced) to the HDMI signal

Available video patterns:



Test pattern generator video formats:

- 480p, 576p, 720p, 1080p, 1080p deep color



MX-HDMI-3D-IB-A

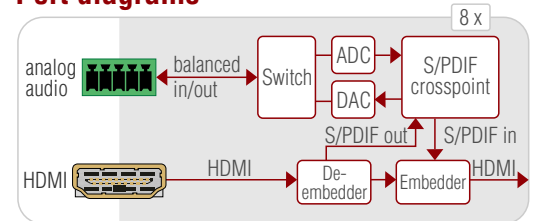


MX-HDMI-3D-IB-S

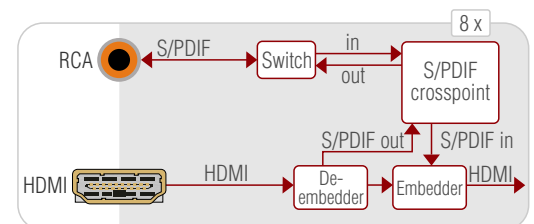


MX-HDMI-3D-IB

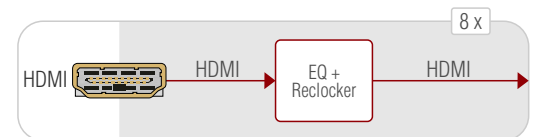
Port diagrams



MX-HDMI-3D-IB-A



MX-HDMI-3D-IB-S



MX-HDMI-3D-IB

Specifications

HDCP compliancy:	yes
Max resolution:	up to 4096 x 2160
3D signal compatibility:	frame packing, side-by-side, top-bottom
Input cable equalization:	20 dB
Power consumption, 3.3 V (MX-HDMI-3D-IB & -IB-S):	0.79 A (typ.), 1.32 A (max.)
Power consumption, 3.3 V (MX-HDMI-3D-IB-A):	1.03 A (typ.), 1.72 A (max.)
Power consumption, 5 V (MX-HDMI-3D-IB & -IB-S):	0.56 A (typ.), 0.93 A (max.)
Power consumption, 5 V (MX-HDMI-3D-IB-A):	0.56 A (typ.), 0.93 A (max.)
Calculated AC Power, W (MX-HDMI-3D-IB & -IB-S):	7.7 (typ.), 12.9 (max.)
Calculated AC Power, W (MX-HDMI-3D-IB-A):	8.9 (typ.), 14.8 (max.)
Heat dissipation, BTU (MX-HDMI-3D-IB & -IB-S):	28 (typ.), 47 (max.)
Heat dissipation, BTU (MX-HDMI-3D-IB-A):	33 (typ.), 54 (max.)
Weight (MX-HDMI-3D-IB & -IB-S):	809 g
Weight (MX-HDMI-3D-IB-A):	865 g
Input connectors:	HDMI, S/PDIF, PHOENIX