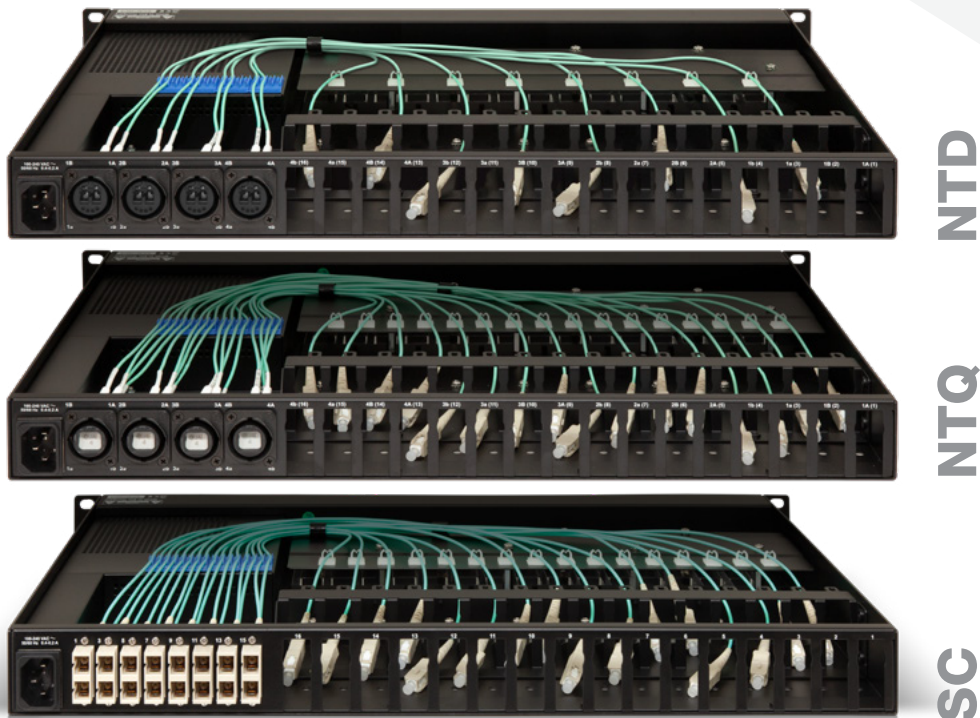


## Rack-mountable PowerTray for up to 16x HDMI20-OPTJ-TX/RX90 Optical Extenders

Part No: 9134 0019 (NTD), 9134 0020 (NTQ), 9134 0018 (SC)



The PowerTray is a 1RU size housing accessory which can enclose up to 16 HDMI20-OPTJ-TX/RX90 units, also providing power source for every installed device. The optical fibers are connected to the four Neutrik OpticalCON Quad connectors, each carrying four signal fibers from four of the extenders. The HDMI tail cables of the extenders are accessible directly at the back of the PowerTray.

HDMI 2.0 optical matrix assembly: by connecting the HDMI connectors outputs of the fully populated PowerTray with the input and output ports of an MX2-8x8-HDMI20-Audio matrix a HDMI 2.0 optical matrix system can be created with Full 4K UHD at 60 Hz 4:4:4 maximum resolution.

### Features:

- 1RU size mounting
- Universal full range AC input with standard C14 socket
- Protections: Short circuit / Overload /
- 3 years warranty
- The extender units can be freely added or removed by users, TX and RX units can mix in any combination in the tray
- 4x Neutrik OpticalCON Quad OR 8x SC Duplex connectors
- Noiseless passive cooling
- Status LED lights on the units are mirrored to the front panel of power tray
- +1 status LED for 5V DC power feedback
- Powering USB port protection: in case a USB port fails the rest of the units keep on working
- Uniquely designed optical and USB cable management
- Optical cables within the power tray are numbered for easy identification and installation

### Specifications:

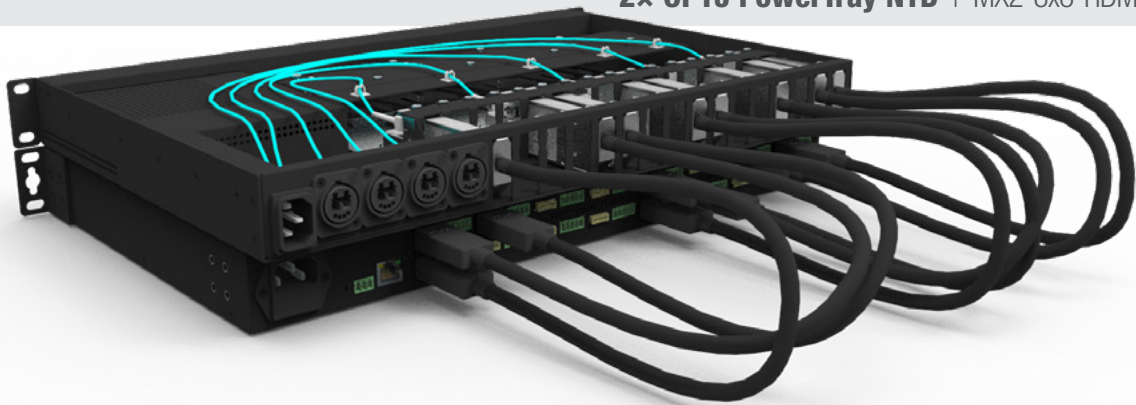
DC output number	16
Power consumption	23,7 W
DC output voltage	5V
Rated current per output port	500 mA
Input voltage range	85 - 264 VAC
Input frequency range	47 - 63 Hz
Operating temperature range	Between 0 and +50 °C (+32 .. +122 °F)
Optical connector type	4x Neutrik OpticalCON Quad OR 4x Neutrik OpticalCON Duo OR 8x SC Duplex
Rack height	1RU
Enclosure	1 mm metal casing
Dimensions	482,6 (19")x43,7 (1RU)x300mm
Weight	4.13 kg
Compliance	CE
Warranty	3 years

# OPTJ PowerTray NTD / NTQ / SC

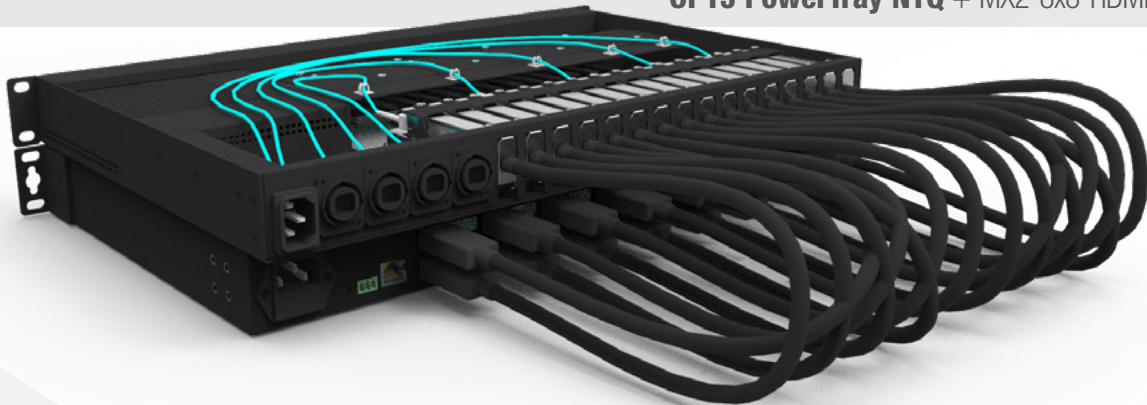
Combine an **MX2-8x8-HDMI20-Audio** matrix with a fully populated rack tray to create a **Full 4K HDMI 2.0 optical matrix**.



2x OPTJ PowerTray NTD + MX2-8x8-HDMI20-Audio



OPTJ PowerTray NTQ + MX2-8x8-HDMI20-Audio



OPTJ PowerTray SC + MX2-8x8-HDMI20-Audio

