

Step by step assembly manual

# Silent series



# Quick checklist

---

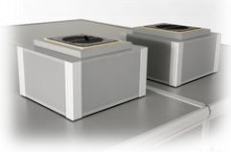
Silent booth  
9300, 9400,  
9500



Ventilation  
units



or



Level



Power cords  
for ventilation  
units



Alan key



Assembly aid  
(optional)



---

Position the **9300 / 9400** Silent booth on a level floor.

Use a level to adjust the Silent 6300 booth.

For optimum use and sound insulation of the 9000 series, position the booth on a carpet floor.

### **DO NOT OVER TIGHTEN THE PANEL LOCKS**

**1.**

Install the installation aid (part. No. P1866) on the first panel, the door panel.

Use the alan key to lock it.

**2.**

Position the panel in upright position and connect the second panel.

Use the alan key to lock it.

**3.**

Connect the first rear panel

**4.5.6.7.8.9**

Connect the side panels and window panels.

Use the correct panel with the cable inlet on the right position.

Continue with all window panels and close up the first installed panel.

When all panels are installed, check all walls are parallel to each other; this must be corrected to fit the roof panels.

**10.**

Position the first roof panel. Be aware that the round cut-out is at the front of the booth

Close up with the second roof panel.

**11.**

Position the ventilation units. And connect them with the power cable.

**12.**

Install the table, be gentle with the wall foaming.

**13.**

When disassembled position the booth in flightcase or transport cart.

**Warning:**

*If the booth is not proper set, the sound insulation may be influenced.*

*Do not kick against the panels when lining out.*

*Do not stand on the roof.*

# Step by step assembly manual Silent series.

---

1.



2.



3.



4.



5.



6.



7.



8.



9.



10.



---

Position the **9500** Silent booth on a level floor.

For optimum use and sound insulation of the 9000 series, position the booth on a carpet floor.

**DO NOT OVER TIGHTEN THE PANEL LOCKS**

**1.**

Install the installation aid (part. No. P1866) on the first front lower panel.

Use the alan key to lock it.

Combine this with the first vertical aluminium stand.

**2.**

Stack the second stand on the first and work around the corner with a low side panel.

Use the alan key to lock it.

**3.**

Position the window panel, lock it with the alan key to the upper stand.

**4.**

Work around the corner to the front with the next front window panel.

**5.**

Connect the next front window panel. Work cautious! lock the panels well.

**6.**

Continue with the side rear panel.

**7.**

Position the next 2 vertical stands and connect them to the panels with the alan key.

**8.**

Continue installing the rest of the side-panels like in the earlier mentioned items.

**9.**

Start installing the lower rear panel with grey foam and stacked on that the upper closed panel with white foam.

**10,11**

The install the door unit and check all alan key connections.

Check that the booth is perfectly square before installing both roof panels.

**12.**

Install the table panel gently in the booth, do not damage the windows or foam while inserting the table.

**Warning:**

*If the booth is not proper set, the sound insulation may be influenced.*

*Do not kick against the panels when lining out.*

*Do not stand on the roof.*

# Step by step assembly manual Silent 9500 series.

---

1.



5.



2.



6.



3.



7.



4.



8.



# Step by step assembly manual Silent 9500 series.

---

9.



10.



11.



12.



## Step by step assembly manual Silent series.

11.



12.



13.



or



### **Important notes:**

Gently lock the panels to each other, do not over-tighten with the alan key / handle.

